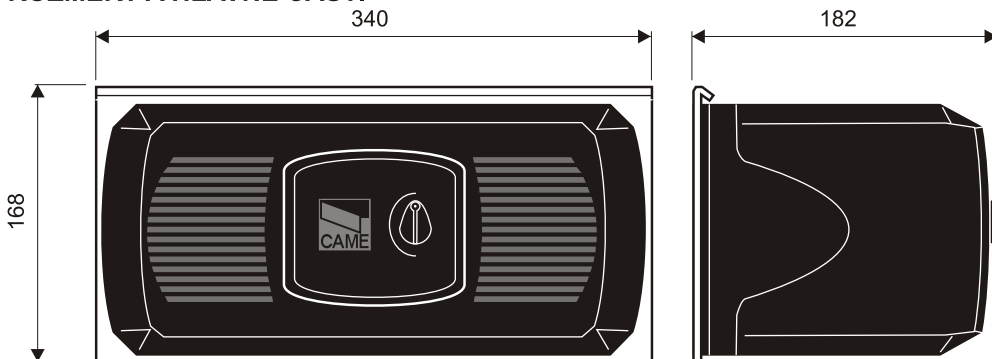


ZÁKLADNÉ TECHNICKÉ ÚDAJE

TYP	Váha	Napájacie napätie	Prúd motora	Výkon motora	Intenzita prevádzky	Ťažná sila	Kondenzátor
F 1000	14 kg	230V AC	1.3A	150W	50%	360 N*m	10 μ F
F 1100 *	13 kg	230V AC	1A	110W	50%	300 N*m	6.3 μ F
F 1024	14.5 kg	24V DC	15A	180W	stála prevádzka	470 N*m	-

* vratný pohon

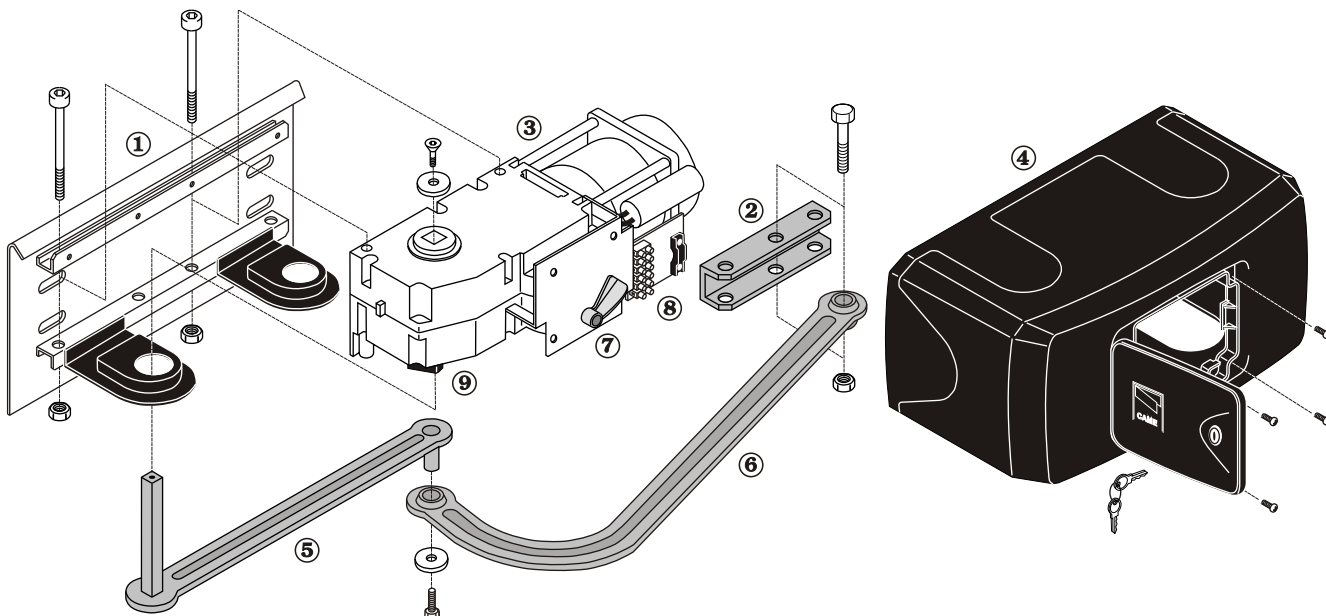
ROZMERY A HLAVNÉ ČASTI



LIMITY POUŽITIA

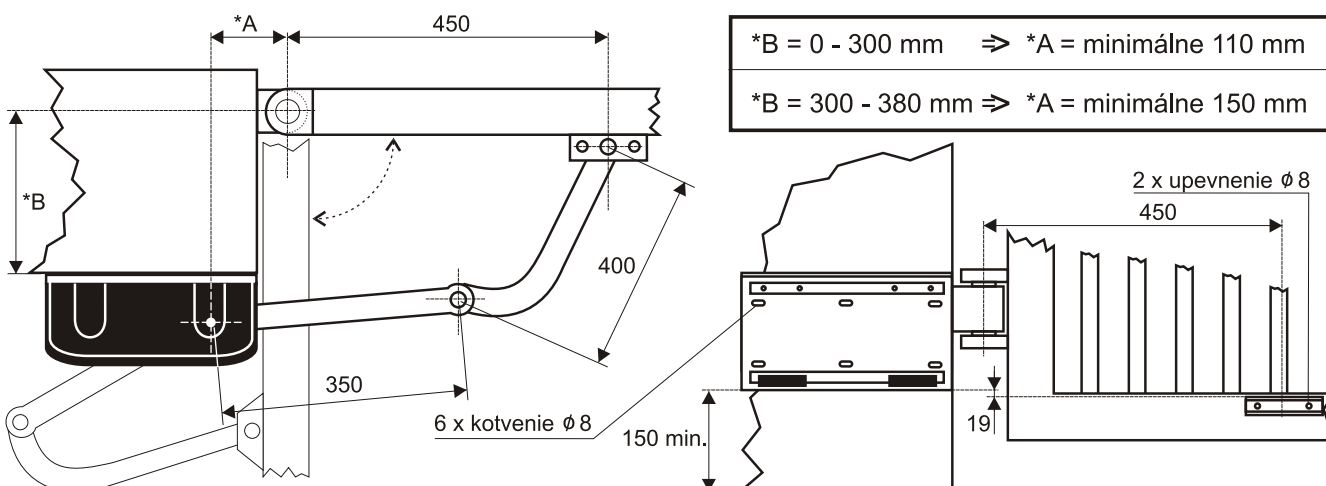
Šírka krídla /m/	Váha krídla /kg/
2.0	800
2.5*	600
3.0*	500
3.5*	450
4.0*	400

* použitie pohonu (typ F1000 a F1024) doporučené s elektrickým zámkom
Pre pohon F1100 je el. zámok potrebný vždy.



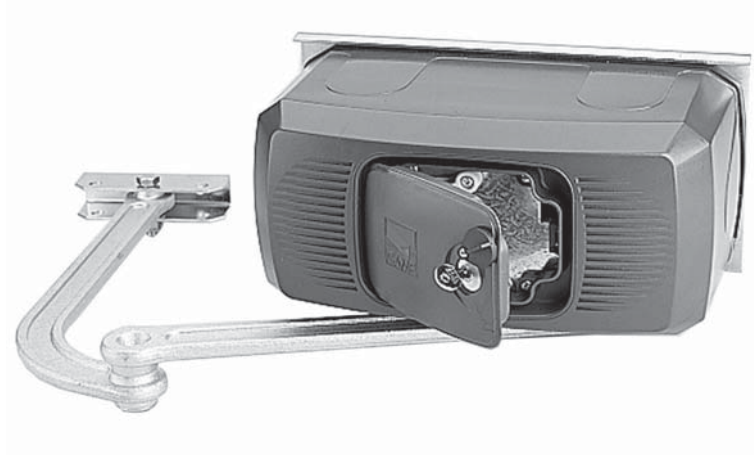
- ① Kotviaca základová platňa pohonu s úchytmi motora
- ② Pevný úchyt krídla brány pre kĺbové rameno
- ③ Motor s prevodovkou (otočiteľný pre P a L motor)
- ④ Čelný kryt pohonu s dvierkami na osobný kľúč
- ⑤ Rameno pohonu
- ⑥ Kĺbové rameno (otočiteľné pre P a L motor)
- ⑦ Odblokovacia páka nevratného pohonu
- ⑧ Svorkovnica elektrických prívodov
- ⑨ Koncové mikropsínače s nast. vačkou

INŠTALÁCIA



AUTOMATION FOR SWING GATES

FERNI SERIES



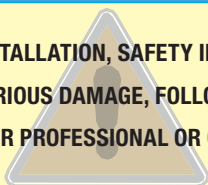
INSTALLATION MANUAL

F1000-F1100

“IMPORTANT INSTALLATION, SAFETY INSTRUCTIONS”

“CAUTION: IMPROPER INSTALLATION MAY CAUSE SERIOUS DAMAGE, FOLLOW ALL INSTALLATION INSTRUCTIONS CAREFULLY”

“THIS MANUAL IS ONLY FOR PROFESSIONAL OR QUALIFIED INSTALLERS”



1 Legend of symbols



This symbol tells you to read the section with particular care.



This symbol tells you that the sections concern safety issues.



This symbol tells you what to say to the end-users.

2 Conditions of use

2.1 Intended use



The FERNI 230V operator is specifically engineered to automate residential and condominium swing gates.

The use of this product for purposes other than those described above and installation executed in a manner other than as instructed in this technical manual are prohibited.

2.2 Restrictions

Length of gate wings: up to 4 metres. Max. angle of gate wing when open: 90°.

Gate leaf width m	Gate leaf weight kg
2.00	800
* 2.50	600
3.00	500
3.50	450
4.00	400

*Whenever the shutter is over 2,5 m., it needs an electrical lock F1000; F1100 always needs it.

3 Reference Standards

The company: CAME cancelli automatici is ISO 9001:2000 quality certified; it has also obtained the ISO 14001 environmental safeguarding certification. CAME engineers and manufactures all of its products in Italy.

This product complies with the following standards: *see paragraph 9 - Declaration of conformity, page 11.*

4 Description

4.1 Gearmotor

This product is engineered and manufactured by CAME CANCELLI AUTOMATICI S.p.A. and complies with current safety regulations. Guaranteed 24 months if not tampered with.

230V A.C. gearmotor with thermal protector; the case is in cast aluminium inside of which rest an endless screw, epicycloidal gear reduction system. Permanent fluid grease lubrication.

4.2 Technical features

Version F1000

Irreversible gearmotor

Motor power supply: 230V a.c. 50/60Hz

Max draw: 1,3A

Power: 150W

Gear ratio: 1/709

Opening time (90°): 18 s

Max. torque: 320 Nm

Duty Cycle: 30%

Protection Rating: IP54

Weight: 14 kg

Operating temperature



Version F1100

Reversible gearmotor

Motor power supply: 230V a.c. 50/60Hz

Max draw: 1A

Power: 110W

Gear ratio: 1/678

Opening time (90°): 18 s

Max. torque: 380 Nm

Duty Cycle: 50%

Protection Rating: IP54

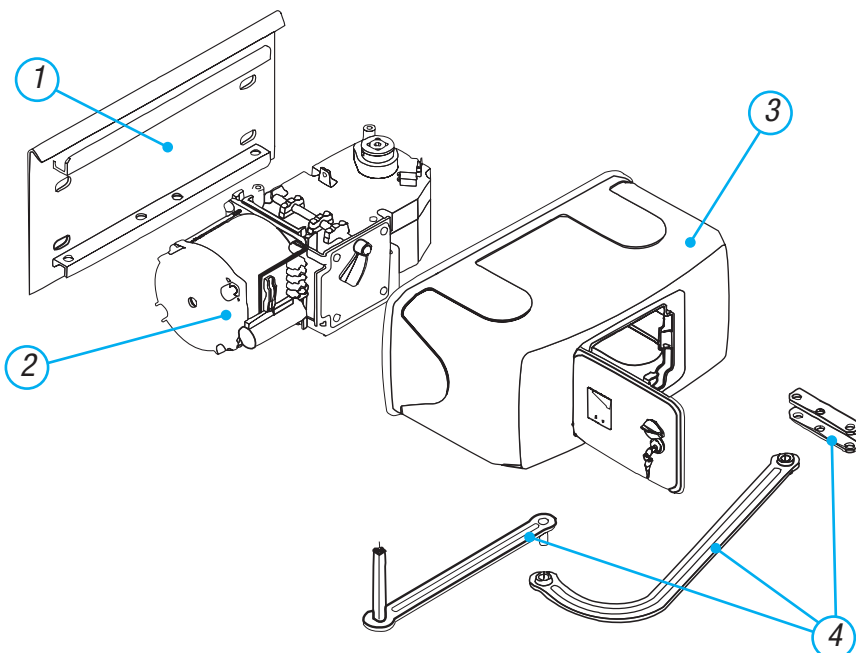
Weight: 13 kg

Operating temperature



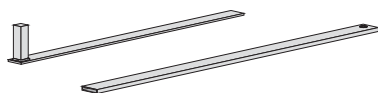
4.3 Description of parts

- 1) Base plate
- 2) Gearmotor assembly
- 3) Motor cover
- 4) Articulated transmission arm

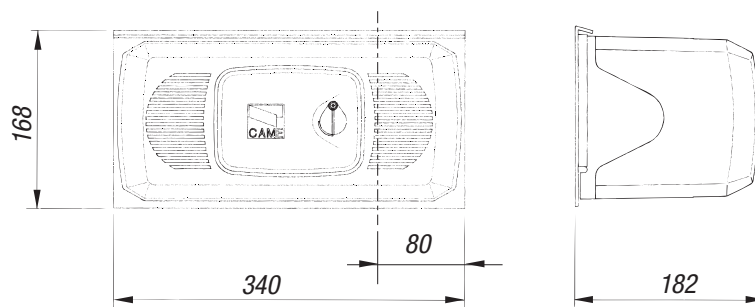


Optional accessory :

F1001 Straight telescopic arm (for single gate wings that are 0,5 to 2 m max long).



4.4 Overall dimensions



5 Installation



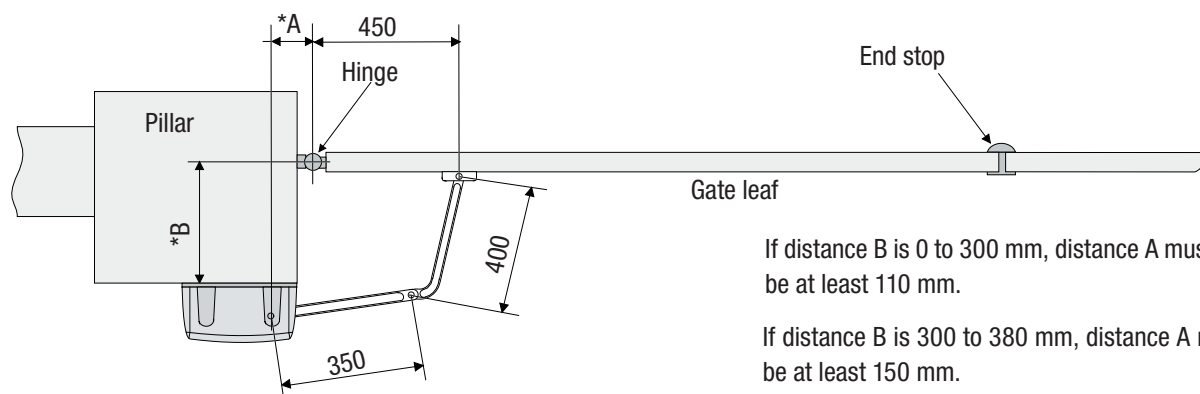
Installation must be carried out by expert qualified personnel and in full compliance with current regulations.

5.1 Preliminary checks



Before installing, do the following:

- Make sure the structure of the gate is sturdy, the hinges work and that there is no friction between moving and non-moving parts;
- Make sure the path of the electrical cables complies with the command and safety instructions;
- Make sure that there is a (soundly secured to the ground) mechanical stop to prevent the gate leaf/gearmotor from over extending.
- ⚡ You may perform internal back up circuit connections, provided you use additional insulation when compared to the other internal live parts;
- Make sure you have suitable tubing and conduits for the electrical cables to pass through and be protected against mechanical damage.



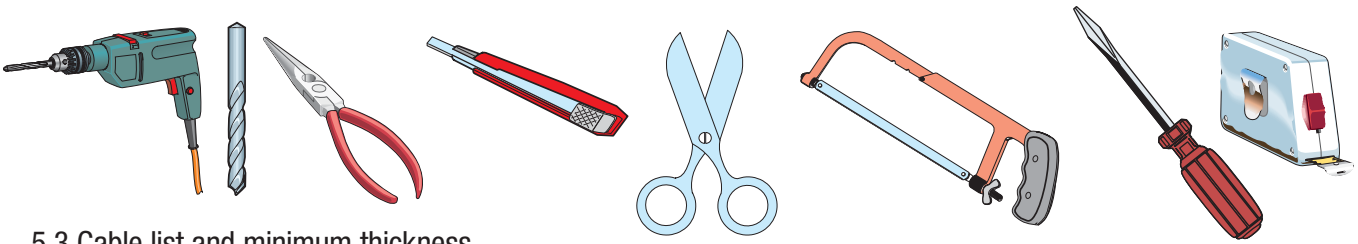
If distance B is 0 to 300 mm, distance A must be at least 110 mm.

If distance B is 300 to 380 mm, distance A must be at least 150 mm.

The data and information shown in this manual may be changed by CAME cancelli automatici s.p.a. at any time without prior warning.

5.2 Tools and materials

Make sure you have all the tools and materials you will need for the installation at hand to work in total safety and compliance with the current standards and regulations. The following figure illustrates the minimum equipment needed by the installer.

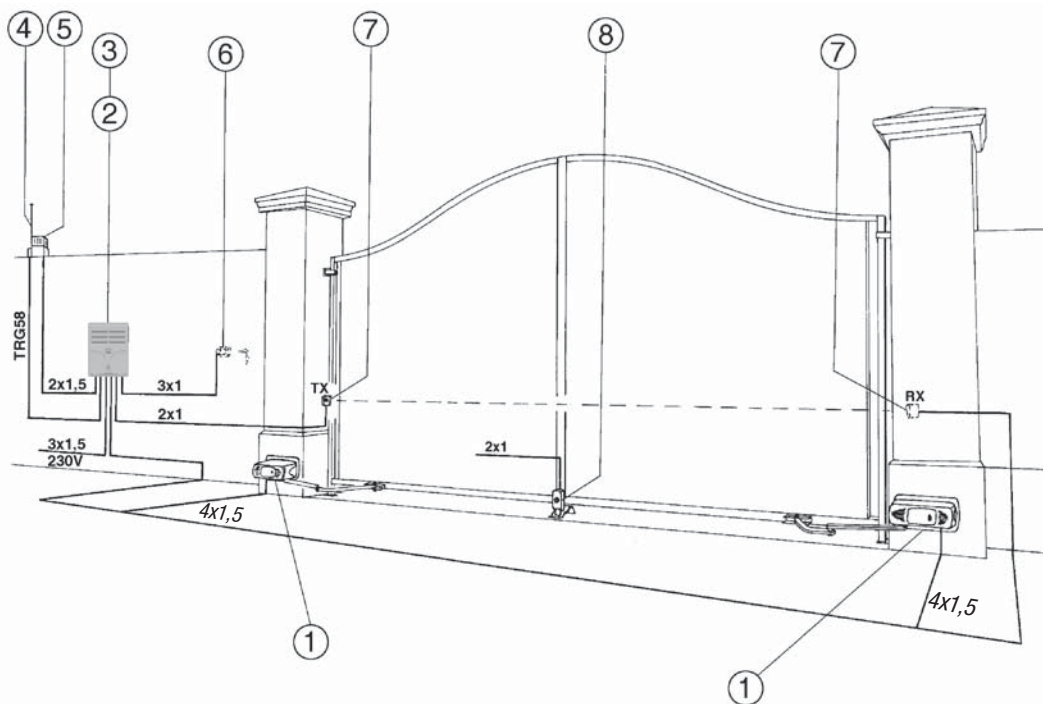


5.3 Cable list and minimum thickness

Connections	Type of cable	Length of cable 1 < 10 m	Leng. cable 10 < 20 m	Leng. cable 20 < 30 m
Control panel power supply 230V	FROR CEI 20-22 CEI EN 50267-2-1	3G x 1,5 mm ²	3G x 2,5 mm ²	3G x 4 mm ²
Motor power supply 230V 2F		4G x 1,5 mm ²	4G x 2,5 mm ²	4G x 4 mm ²
Flashing light 230V		2 x 0,5 mm ²	2 x 1 mm ²	2 x 1,5 mm ²
Photocell transmitters		2 x 0,5 mm ²	2 x 0,5 mm ²	2 x 0,5 mm ²
Photocell receivers		4 x 0,5 mm ²	4 x 0,5 mm ²	4 x 0,5 mm ²
24V Accessories power supply		2 x 0,5 mm ²	2 x 0,5 mm ²	2 x 1 mm ²
Command buttons		2 x 0,5 mm ²	2 x 0,5 mm ²	2 x 0,5 mm ²
Antenna connection	RG58	max. 10 m		

N.B.: If the cable length differs from that specified in the table, then you must determine the proper cable diameter in the basis of the actual power draw by the connected devices and depending on the standards specified in CEI EN 60204-1. For connections that require several, sequential loads, the sizes given on the table must be re-evaluated based on actual power draw and distances.

5.4 Standard installation



- 1 - Operator
- 2 - Control panel
- 3 - Radio receiver
- 4 - Antenna
- 5 - Flashing light
- 6 - Selector switch
- 7 - Photocells
- 8 - Electric lock

The data and information shown in this manual may be changed by CAME cancelli automatici s.p.a. at any time without prior warning.