

PG 03 PADDLE GATE

INSTALLATION AND MAINTENANCE HANDBOOK

WARRANTY CERTIFICATE



PG 03 PADDLE GATE

TECHNICAL SPECIFICATIONS



PG 03 55 / Clear Passage Width : 550 mm

PG 03 90 / Clear Passage Width : 900 mm

GENERAL SPECIFICATIONS

Power

110/220V. 60/50 Hz. AC (% ± 10), 24 V DC.

Single Unit : at stand-by ~ 10 W, during passage max. ~ 39 W

Center Unit : at stand-by $\sim 10 + 10$ W, during passage max. $\sim 39 + 39$ W

Dimensions

550 mm Clear Passage Width

Single Unit : 1488 x 175 (+250 wing length) x 1000 mm

Center Unit : 1488 x 175 (+250x2 wing length) x 1000 mm

Combo Unit : 1488 x 175 (+250+425 wing length) x 1000 mm

900 mm Clear Passage Width

Single Unit : 1488 x 175 (+425 wing length) x 1000 mm

Center Unit : 1488 x 175 (+425x2 wing length) x 1000 mm

Combo Unit : 1488 x 175 (+250+425 wing length) x 1000 mm

Body Features

The body is made of electrostatic powder coated steel (opt.304-grade stainless steel).



PG 03 PADDLE GATE

TECHNICAL SPECIFICATIONS

	Adequate space is available inside both sides of the body for installation of various reader devices and wiring.
Wings	12mm thick acrylic or 10mm tempered glass wings with 900 and 1200 mm heights as standard.
Top Lid	Tempered glass top lid (opt. other materials).
Weight	~50 kg (single), ~60 kg (center).
Operating Temperature, Humidity, IP Rating	(-20°C) – (+68°C) (opt:- 50°C with heater positive), RH 95% (±2%) non-condensing, IP 44 indoor.
Minimum Passage Performance	≥ 15 Million passages

SYSTEM SPECIFICATIONS

Indicators	<p>Illuminated LED indicators are provided on both posts and on top lid.</p> <p>Indicators illuminate in blue at stand by; green during authorized passages (sliding asteroid animated on top lid); red when an unauthorized attempt is detected or during alert mode.</p>
Control System	Controlled by dry contact or grounding input. All inputs are opto-coupler protected.
Integration	Compatible with all access control systems that provide dry contact or grounding outputs. Optional RS232/RS485/TCP IP control module is available.
System Features	<p>Industrial design with IR multisensory passage detection system, PWM DC motor, controlled by microprocessor.</p> <p>Wings open rapidly to allow passage when input is received by either direction. Internal dip switch selectable free passage by photocell detection, restricted access, controlled access on both or single direction modes are built in features.</p> <p>Passage lane is controlled by 8 pieces of sensors.</p> <p>Thanks to adjustable electronic torque control in addition to safety sensors, wings do not harm a person; in case of getting stuck, wings stop and reverse.</p> <p>Wings do not open when in closed position.</p> <p>Passages can be restricted by enable/disable feature even if the passage authorization is granted.</p>
Time Out	2-6-12 seconds or infinite, dipswitch selectable.
Output Data	System provides dry contact passage feedback by relays separately for each direction. System provides busy signal during passage.

FUNCTIONAL FEATURES

Passage	<p>System works bi-directional (in-out).</p> <p>Suitable for passages with wheelchair, suitcase, trolley (PG 03 90 models).</p> <p>Normally the wings are in closed position. Upon authorization from the control unit, the wings open to allow passage of a single person and return to the closed position. In case of multiple authorization from the control unit, wings keep open until the continuous passages are completed.</p> <p>Built in sensors detect unauthorized entry into the passage area and gate generates audio/visual alarm. In case of an unauthorized attempt by entering the passage area before</p>
----------------	---



PG 03 PADDLE GATE

TECHNICAL SPECIFICATIONS

the wings are closed, wings close to prevent the unauthorized passage while the gate generates alarm.

In any case, presence of a person between the open wings is detected by safety sensors and gate stops the movement of the wings to prevent a harm to the person.

Flow Rate

Wing opening speed/time: ~0,5-1,2 sec. wing closing speed/time: ~0,5-1,2 sec.
Nominal : ~30 - 60 passages/minute (recommended reference figure).
Utilisation of different access control units can change the flow rate.

Emergency Mode

System allows free passage in emergency mode and in case of power failure by unlocking the wings.

CERTIFICATION

Compliance

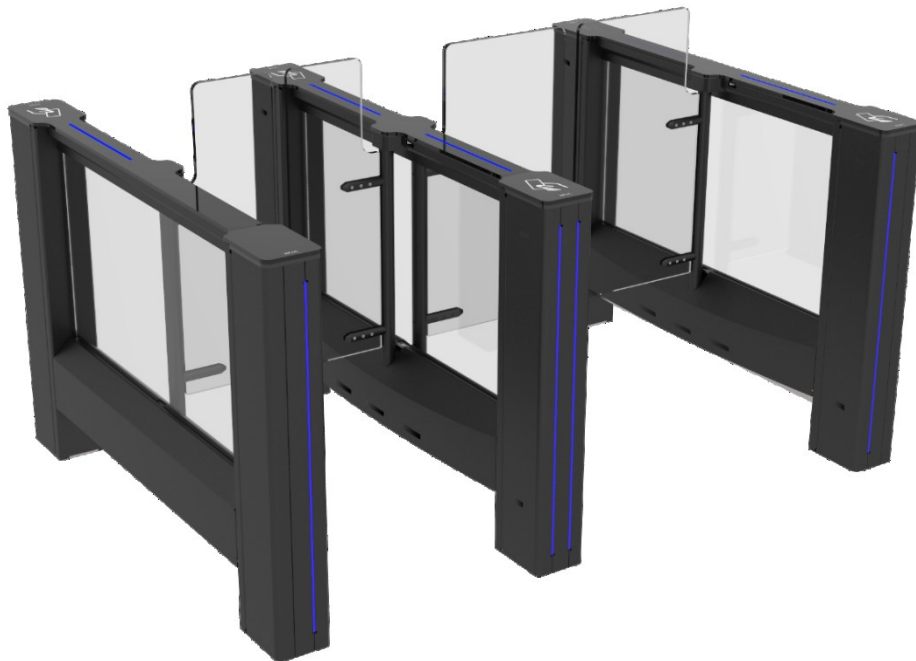
CE, RoHS

OPTIONAL ACCESSORIES AND APPLICATIONS

Options

Remote control unit, manual control, coin slot/intelligent coin system and coin box, counter, card reader pole, photocell alarm sensor, interface unit for PC, RS485, RS232 and LAN, audio-messaging system, base plate, separator.

Note: A passage lane consists of min. 2 pieces of single units facing each other.

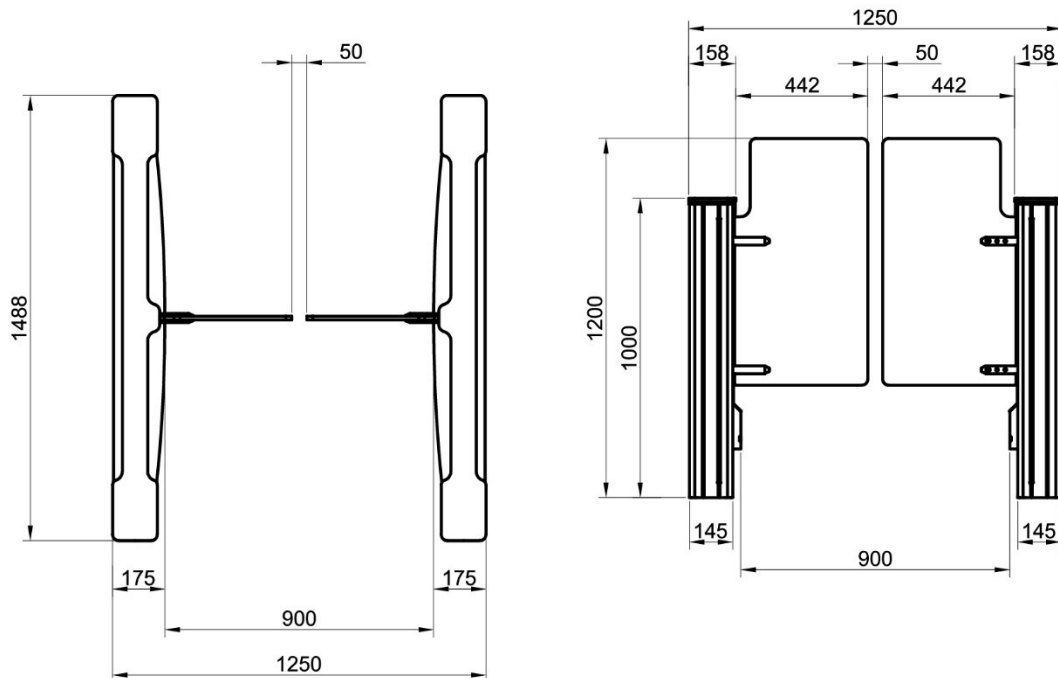
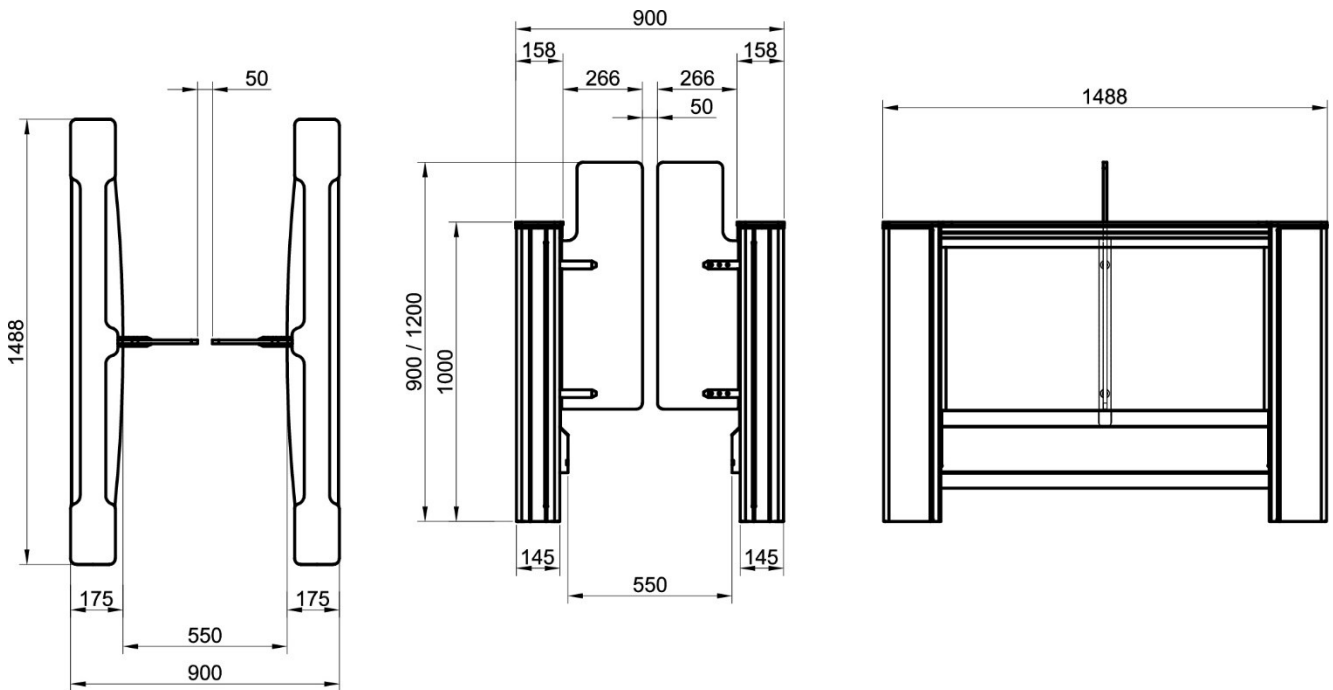


Units with 550/900 mm passage widths can be combined as above.



PG 03 PADDLE GATE

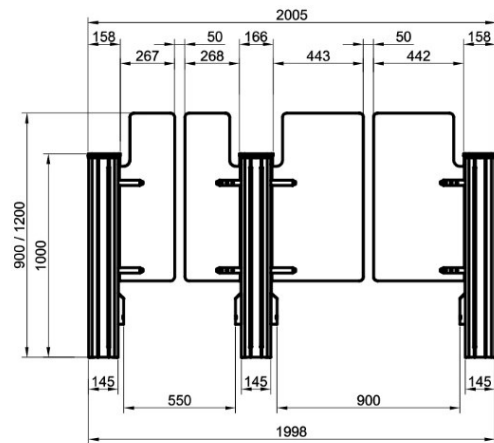
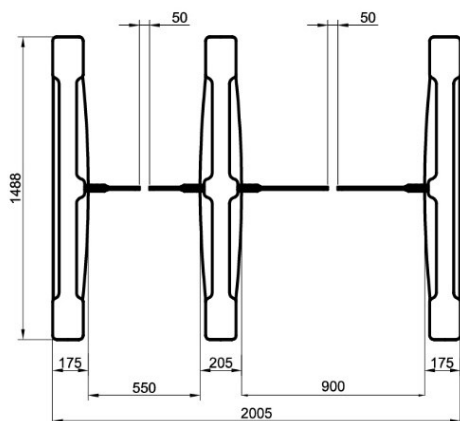
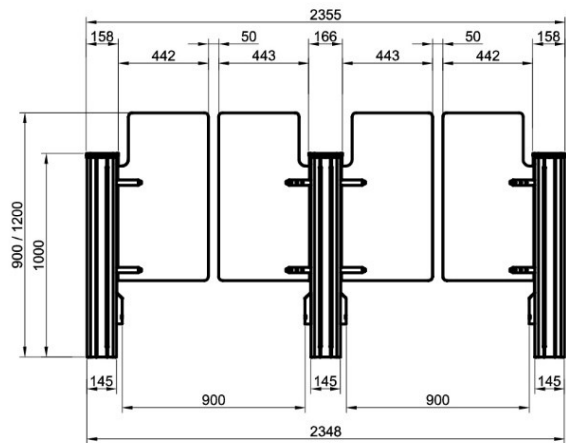
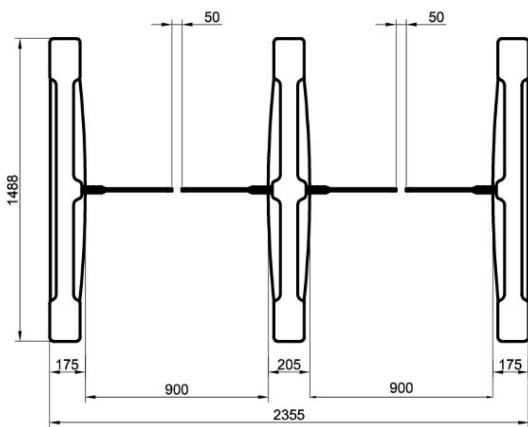
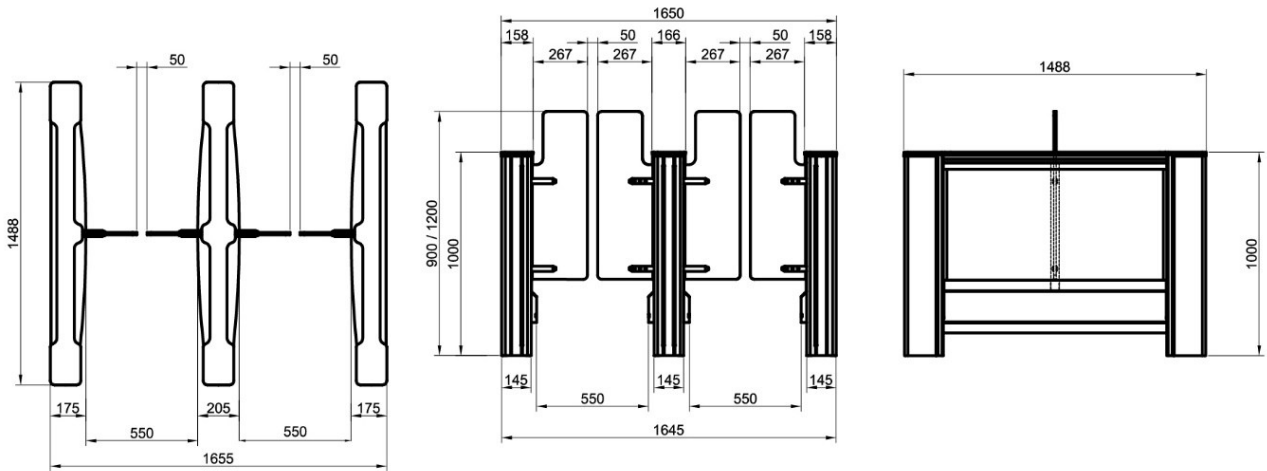
TECHNICAL SPECIFICATIONS

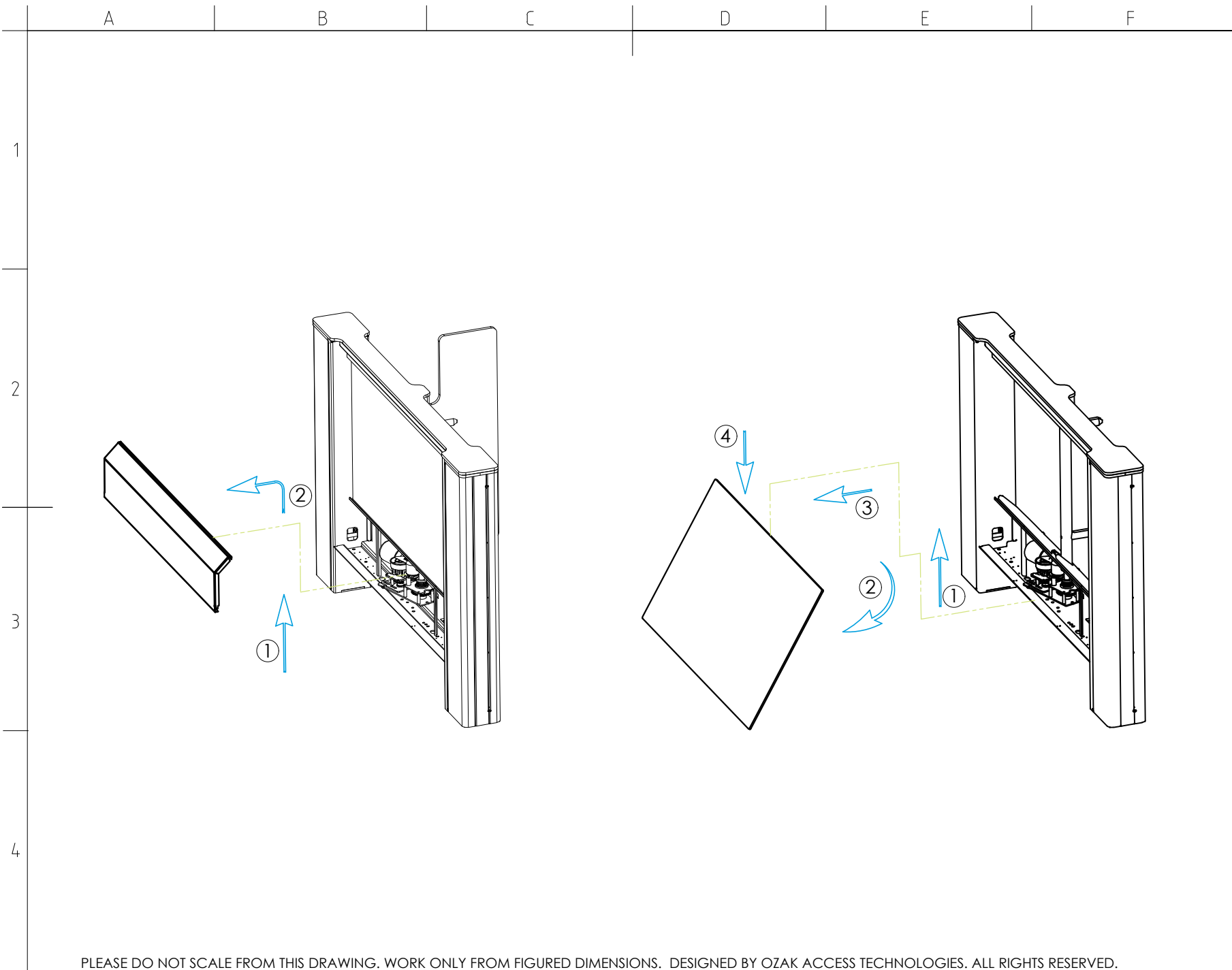




PG 03 PADDLE GATE

TECHNICAL SPECIFICATIONS





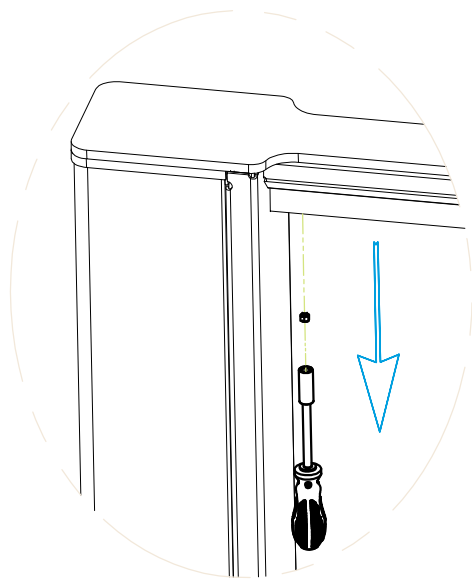
CUSTOMER
Proposal No
Page No
1 / 3
Explanations
PG 03
Sales Representative
Authorised Designer
Kudret ERDİNÇ
Draftsman
Bağış İLHAN
CUSTOMER CONFIRMATION AUTHORISED PERSON Name - Surname - Signature - Stamp

PLEASE DO NOT SCALE FROM THIS DRAWING. WORK ONLY FROM FIGURED DIMENSIONS. DESIGNED BY OZAK ACCESS TECHNOLOGIES. ALL RIGHTS RESERVED.

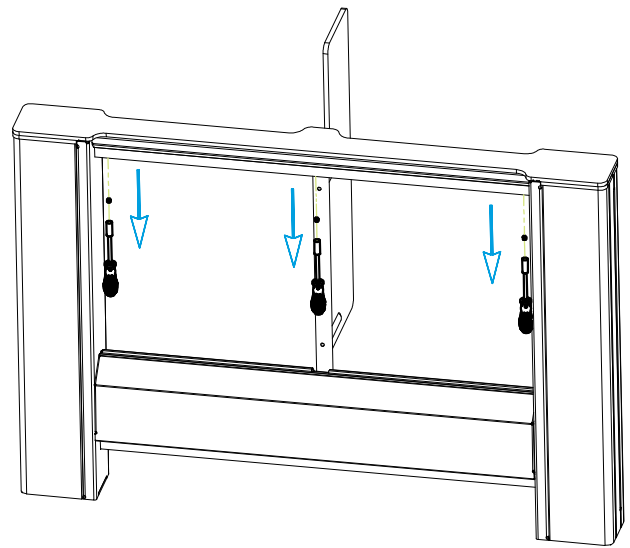
* Please sign / stamp this Technical Drawing and fax or e-mail a scanned copy back to Ozak Access Technologies as a confirmation of your drawing.

A B C D E F

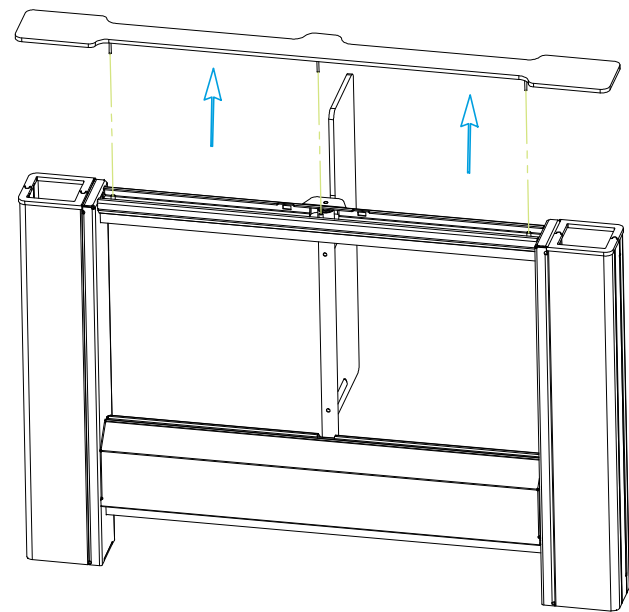
1



2



3



4



CUSTOMER

Proposal No

Page No

2 / 3

Explanations

PG 03

Sales Representative

Authorised Designer

Kudret ERDİNÇ

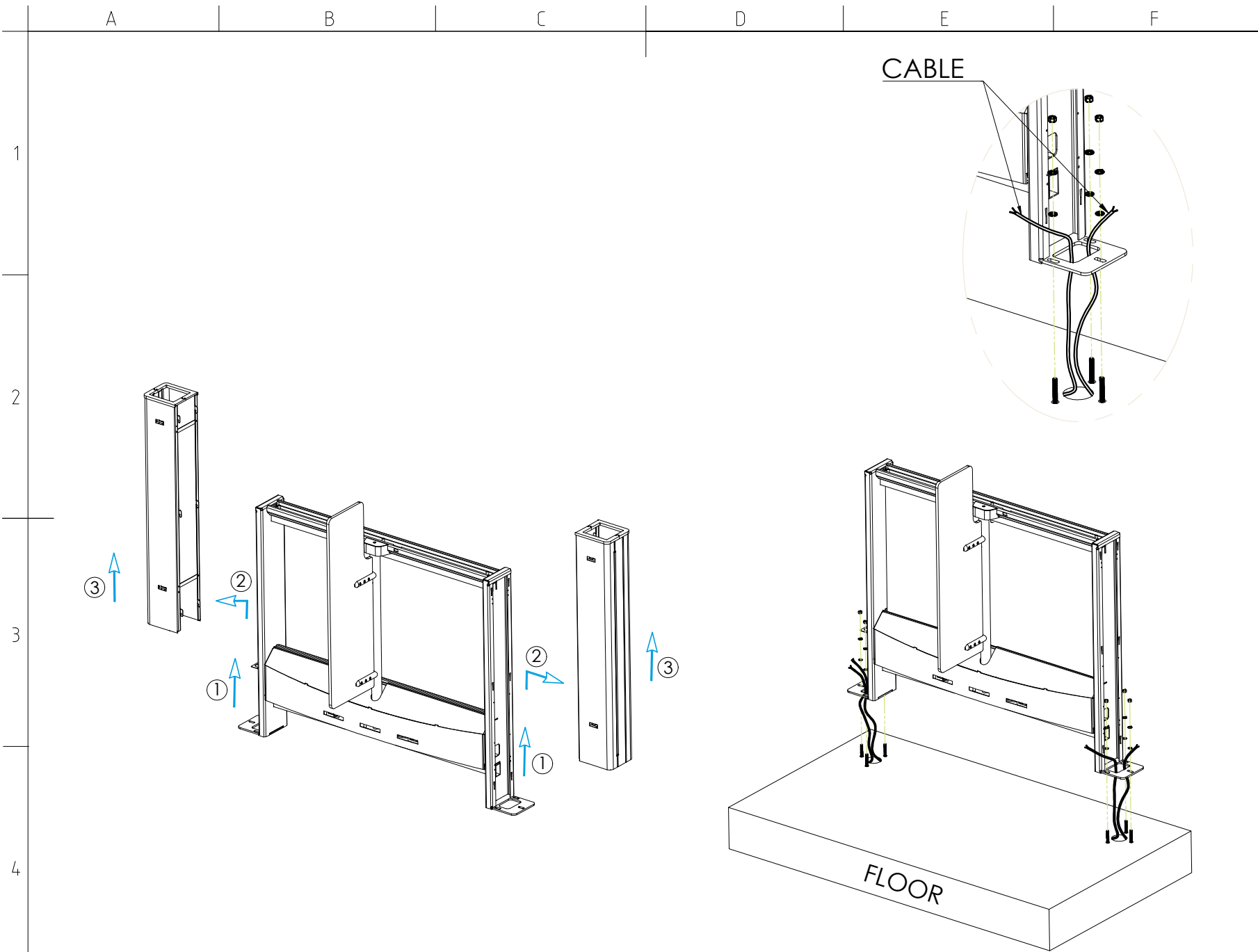
Draftsman

Bağış İLHAN

CUSTOMER CONFIRMATION
AUTHORISED PERSON
Name - Surname - Signature -
Stamp

PLEASE DO NOT SCALE FROM THIS DRAWING. WORK ONLY FROM FIGURED DIMENSIONS. DESIGNED BY OZAK ACCESS TECHNOLOGIES. ALL RIGHTS RESERVED.

* Please sign / stamp this Technical Drawing and fax or e-mail a scanned copy back to Ozak Access Technologies as a confirmation of your drawing.

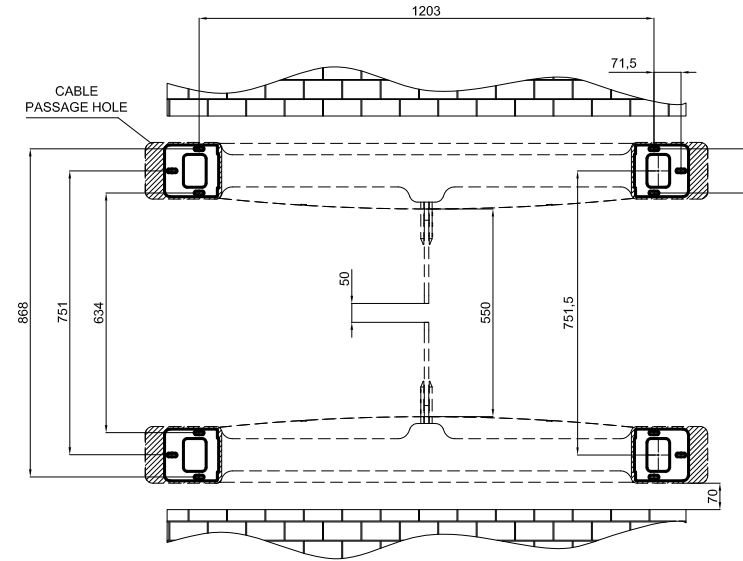
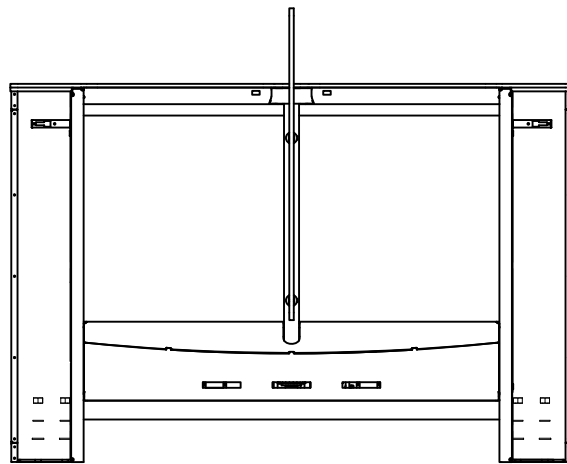


CUSTOMER
Proposal No
Page No
3 / 3
Explanations
PG 03
Sales Representative
Authorised Designer
Kudret ERDİNÇ
Draftsman
Başı İLHAN
CUSTOMER CONFIRMATION
AUTHORISED PERSON
Name - Surname - Signature - Stamp

PLEASE DO NOT SCALE FROM THIS DRAWING. WORK ONLY FROM FIGURED DIMENSIONS. DESIGNED BY OZAK ACCESS TECHNOLOGIES. ALL RIGHTS RESERVED.

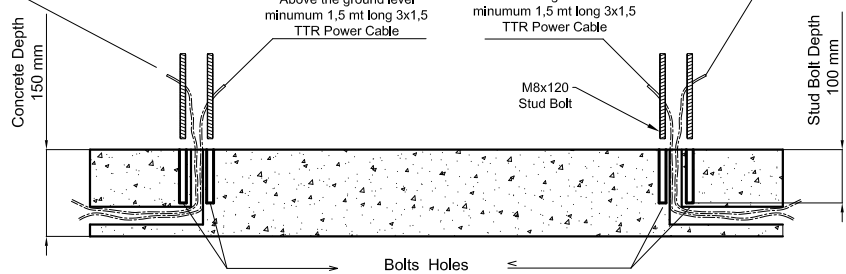
* Please sign / stamp this Technical Drawing and fax or e-mail a scanned copy back to Ozak Access Technologies as a confirmation of your drawing.

GROUND MOUNTING PLAN

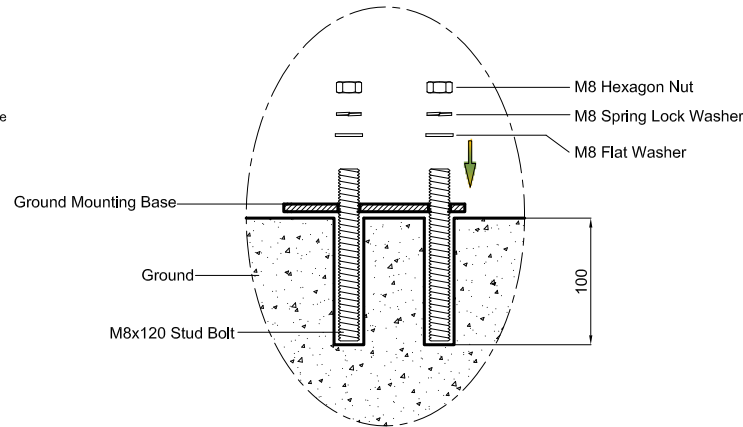


Above the ground level
minimum 1,5 mt long
CAT 5, CAT 6 etc Data Cable

Above the ground level
minimum 1,5 mt long
CAT 5, CAT 6 etc Data Cable



GROUND MOUNTING DETAIL



CUSTOMER

Proposal No

Page No

Explanations

Sales Representative

Authorised Designer

Draftsman

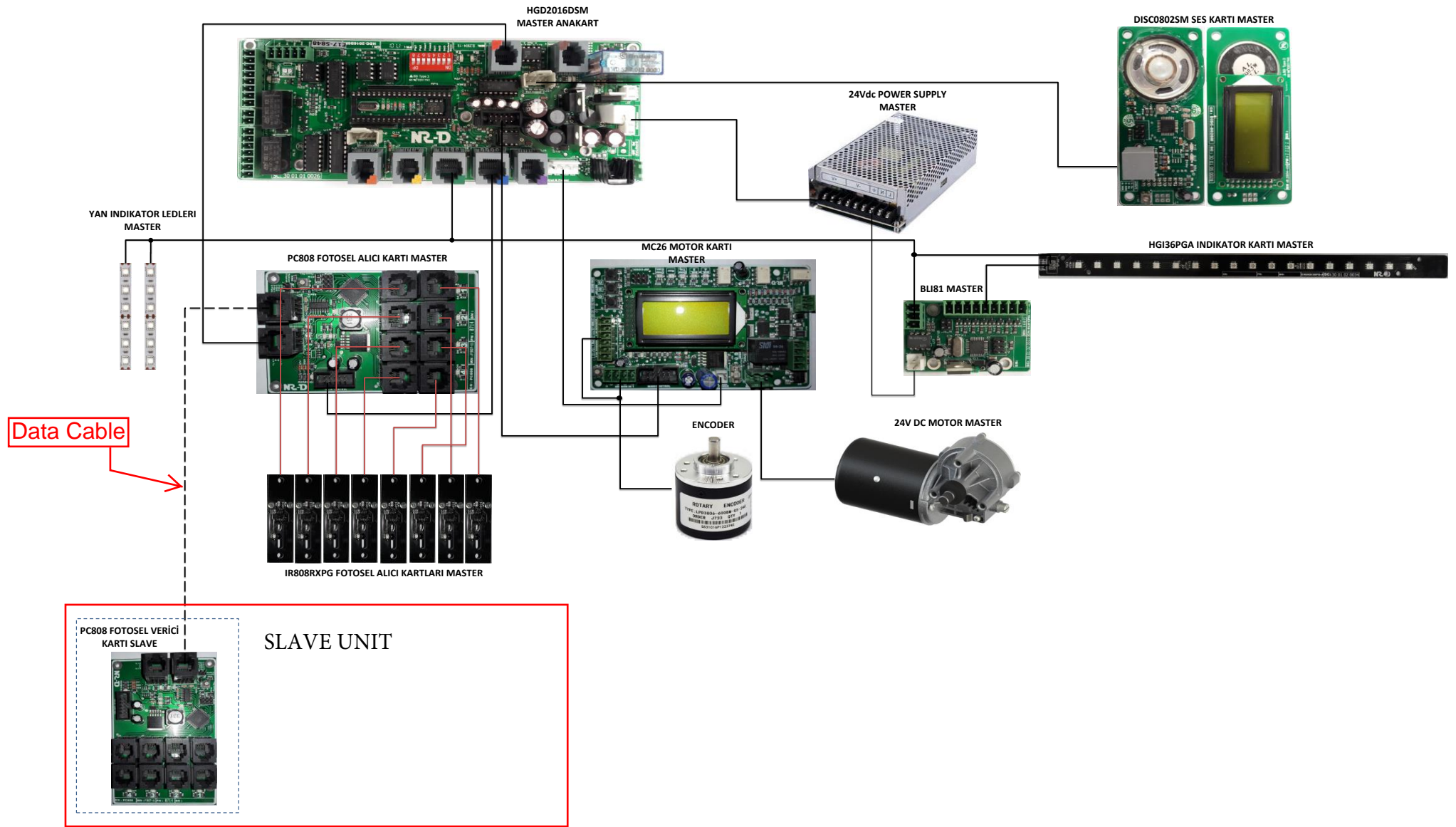
CUSTOMER CONFORMATION

AUTHORISED PERSON

Name - Surname - Signature - Stamp

PLEASE DO NOT SCALE FROM THIS DRAWING. WORK ONLY FROM FIGURED DIMENSIONS. DESIGNED BY OZAK ACCESS TECHNOLOGIES. ALL RIGHTS RESERVED.

* Please sign / stamp this Technical Drawing and fax or e-mail a scanned copy back to Ozak Access Technologies as a confirmation of your drawing.



HGD2016DSM
MASTER ANAKART

DISC0802SM SES KARTI MASTER

24Vdc POWER SUPPLY
MASTER

YAN INDIKATOR LEDLERI
MASTER

PC808 FOTOSEL ALICI KARTI MASTER

MC26 MOTOR KARTI
MASTER

HGI36PGA INDIKATOR KARTI MASTER

BLI81 MASTER

Data Cable

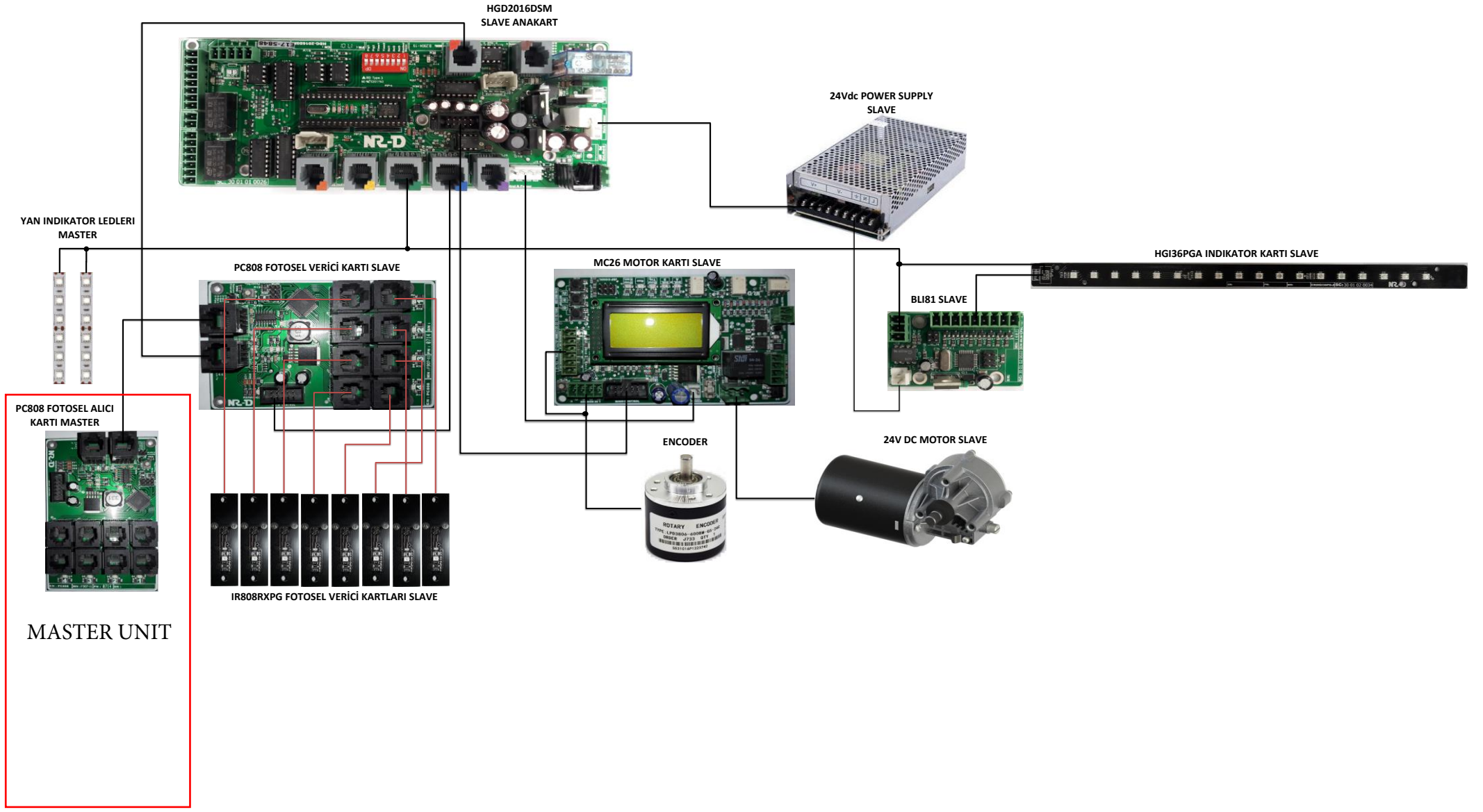
ENCODER

24V DC MOTOR MASTER

IR808RXPG FOTOSEL ALICI KARTLARI MASTER

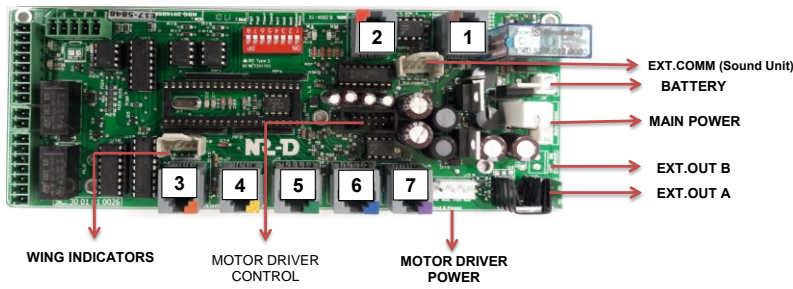
PC808 FOTOSEL VERICI
KARTI SLAVE

SLAVE UNIT



MAIN BOARD CONNECTOR PIN CONFIGURATIONS

HDG 2016DSM MAIN CARD



WING INDICATORS		CABLE COLORS	
1 2 3 4	1	Green	GREEN
	2	Blue	BLACK
	3	Red	RED
	4	+12Vdc	YELLOW

MAIN POWER		CABLE COLORS	
1 2 3 4	1	+24Vdc	BLUE
	2	+24Vdc	GRAY
	3	Gnd.	BROWN
	4	Gnd.	BLACK

EXT.OUT-A		CABLE COLORS	
1 2	1	+24V	RED
	2	Out	BLACK

EXT.OUT-B		CABLE COLORS	
1 2	1	+24V	N.C.
	2	Out	N.C.

MOTOR DRIVER POWER		CABLE COLORS	
1 2 3 4	1	+24Vdc	BLUE
	2	Batt.Out	N.C.
	3	+12Vdc	N.C.
	4	Gnd.	BLACK

BATTERY		CABLE COLORS	
1 2	1	Gnd	BLACK
	2	+12Vdc	RED

EXT.COMM (Sound Unit)		CABLE COLORS	
1 2 3 4	1	Tx	GREEN
	2	Rx	BLACK
	3	Vcc	RED
	4	Gnd	YELLOW

6		CABLE COLORS	
MOTOR DRIVER CONTROL			
1-10	1	MOTOR FREN	GRAY
	2	OVER CURRENT	GRAY
	3	GND	GRAY
	4	MOTOR START/STOP	GRAY
	5	GND	GRAY
	6	RESERVE	GRAY
	7	N.C.	GRAY
	8	N.C.	GRAY
	9	N.C.	GRAY
	10	N.C.	GRAY

1		CABLE COLORS	
DIRECTION SENSORS(PROX.SWITCH)			
1 2 3 4 5 6	1	+12Vdc	BLUE
	2	Sw_b	YELLOW
	3	Gnd	GREEN
	4	Sw_a	RED
	5	Gnd	BLACK
	6	Vcc	WHITE

2		CABLE COLORS	
RS 232 COMM (MASTER/SLAVE LINK)			
1 2 3 4	1	Rx	BLACK
	2	Gnd	RED
	3	Gnd	GREEN
	4	Tx	YELLOW

3		CABLE COLORS	
A-B SIDE ARROW INDICATOR			
1 2 3 4	1	Gnd	BLACK
	2	data	RED
	3	+24Vdc	GREEN
	4	N.c.	YELLOW

4		CABLE COLORS	
B-A SIDE ARROW INDICATOR			
1 2 3 4	1	Gnd	BLACK
	2	data	RED
	3	+24Vdc	GREEN
	4	N.c.	YELLOW

5		CABLE COLORS	
TOP RGB LED STRIP			
1 2 3 4 5 6 7 8	1	A-B Blue	BLACK
	2	A-B Red	RED
	3	A-B Green	GREEN
	4	+12Vdc	YELLOW
	5	B-A Blue	BLACK
	6	B-A Red	RED
	7	B-A Green	GREEN
	8	+12Vdc	YELLOW

6		CABLE COLORS	
PHOTOCELL CONTROL			
1 2 3 4 5 6 7 8	1	N.c.	ORANGE
	2	+24vdc	WHITE
	3	N.c.	BLACK
	4	+24v	RED
	5	Handshake Data	GREEN
	6	Gnd.	YELLOW
	7	Tx	BLUE
	8	Rx	BROWN

7		CABLE COLORS	
MOTOR DRIVER CONTROL			
1 2 3 4	1	Direction	BLACK
	2	Start/Stop Data	RED
	3	Over Curr.	GREEN
	4	N.C.	YELLOW

IR RECEIVER (MASTER UNIT)



Receive Modul

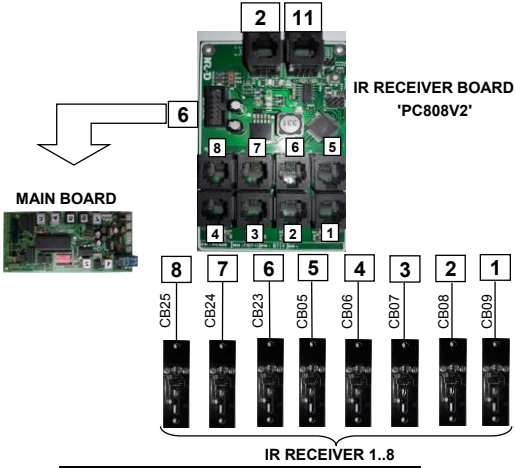


REAR VIEW

ALL RECEIVER MODULES		
	RECEIVER UNITS	CABLE COLORS
1	+5Vdc	YELLOW
2	Receive Data	GREEN
3	Gnd	RED
4	Ind_led	BLACK

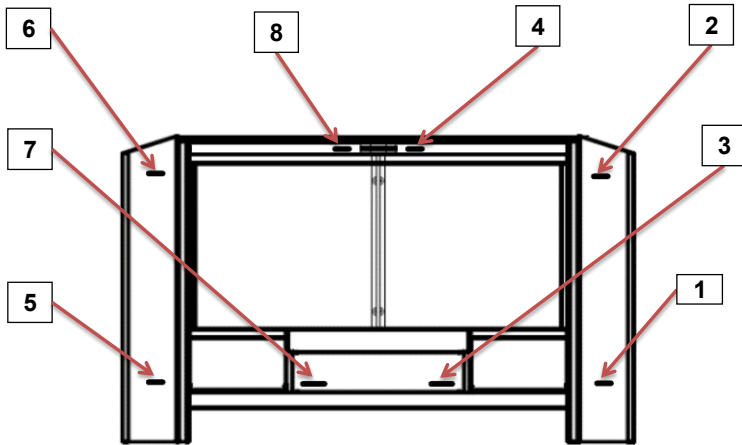
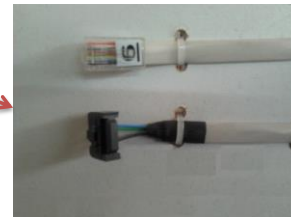
R 1..8		
	RECEIVER UNITS	CABLE COLORS
1	+5Vdc	YELLOW
2	Receive Data	GREEN
3	Gnd	RED
4	Ind_led	BLACK

11		
	M/S COMM.	CABLE COLORS
1	Pass Tx	WHITE
2	Main Tx	BLACK
3	Gnd	RED
4	Gnd	GREEN
5	Main Rx	YELLOW
6	Pass Rx	BLUE



6		
	PHOTOCELL CONTROL	CABLE COLORS
1	+5Vdc	N.C
2	+5Vdc	N.C
3	+24Vdc	ORANGE
4	+24Vdc	WHITE
5	I/O1	BLACK
6	Gnd	RED
7	I/O2	GREEN
8	Gnd	YELLOW
9	Rx	BLUE
10	Tx	BROWN

2		
	MAIN COMM.	CABLE COLORS
1	Main Rx	YELLOW
2	Gnd	GREEN
3	Gnd	RED
4	Main Tx	BLACK

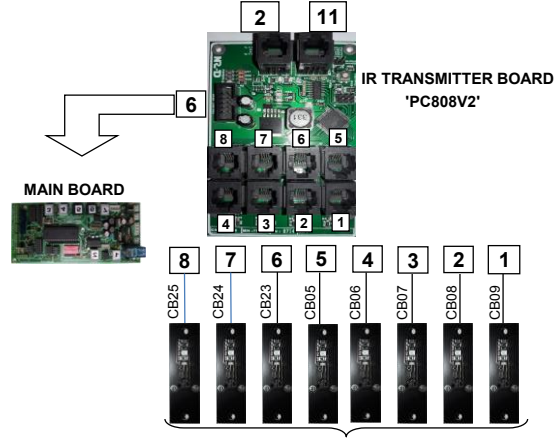


MASTER UNIT'S SENSOR POSITIONS
FRONT VIEW

IR TRANSMITTER (SLAVE UNIT)



ALL RECEIVER MODULES		
RECEIVER UNITS	CABLE COLORS	
1 2 3 4		
1 +5Vdc	YELLOW	
2 Receive Data	GREEN	
3 Gnd	RED	
4 Ind_led	BLACK	



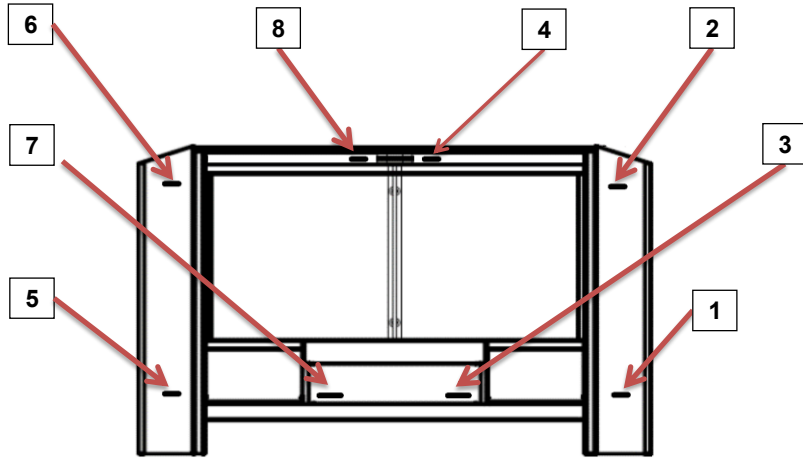
R 1..8		
RECEIVER UNITS	CABLE COLORS	
1 2 3 4		
1 +5Vdc	YELLOW	
2 Receive Data	GREEN	
3 Gnd	RED	
4 Ind_led	BLACK	

11		
M/S COMM.	CABLE COLORS	
1 2 3 4 5 6		
1 Pass Tx	BLUE	
2 Main Tx	YELLOW	
3 Gnd	GREEN	
4 Gnd	RED	
5 Main Rx	BLACK	
6 Pass Rx	WHITE	

6		
MAIN CONTROL	CABLE COLORS	
1 2 3 4 5 6 7 8 9 10		
1 +5Vdc	N.C.	
2 +5Vdc	N.C.	
3 +24Vdc	BLACK	
4 +24Vdc	N.C.	
5 I/O1	N.C.	
6 Gnd	N.C.	
7 I/O2	GREEN	
8 Gnd	BLUE	
9 Rx	N.C.	
10 Tx	N.C.	

Bottom View

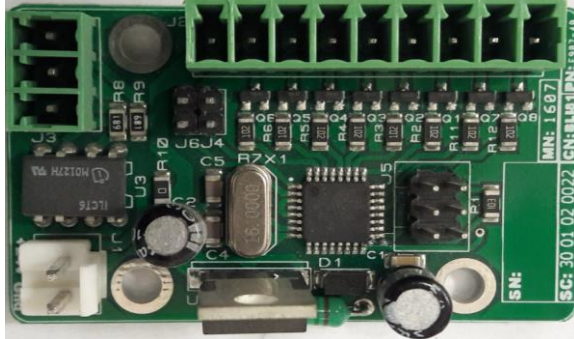
2		
MAIN COMM.	CABLE COLORS	
1 2 3 4		
1 Main Rx	YELLOW	
2 Gnd	GREEN	
3 Gnd	RED	
4 Main Tx	BLACK	



SLAVE UNIT'S SENSOR POSITIONS FRONT VIEW

TOP INDIKATOR CONTROL UNIT

BLI81 TOP INDIKATOR CONTROL CARD



EXT.OUT-A			
1 2			CABLE COLORS
1	+24V		RED
2	GND		BLACK

2			
ENCODER DATA			CABLE COLORS
1	1	+24VDC	GRAY
2	2	N.C.	
3	3	N.C.	
4	4	LED OUT6	GRAY
5	5	LED OUT 5	GRAY
6	6	LED OUT4	GRAY
7	7	LED OUT3	GRAY
8	8	LED OUT2	GRAY
9	9	LED OUT1	GRAY

2			
ENCODER DATA			CABLE COLORS
1	1	INPUT	YELLOW
2	2	N.C	
3	3	N.C	

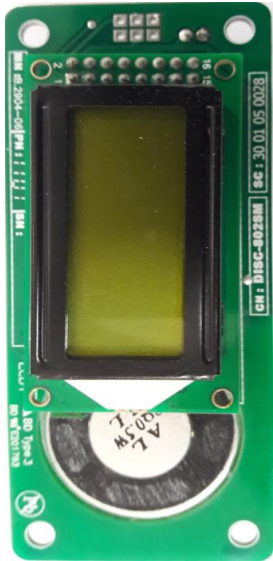
TOP INDICATOR UNIT

HGI36PG-A

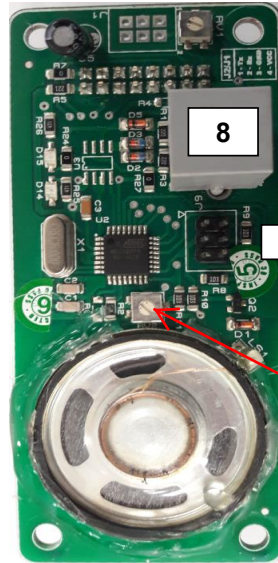


6			
MOTOR DRIVER CONTROL		CABLE COLORS	
10 9	1	RED LED	GRAY
	2	BLUE LED	GRAY
	3	GREEN LED 1	GRAY
	4	GREEN LED 2	GRAY
	5	GREEN LED 3	GRAY
	6	GREEN LED 4	GRAY
	7	GREEN LED 5	GRAY
	8	GREEN LED 6	GRAY
2 1	9	+24VDC	GRAY
	10	+24VDC	GRAY

SOUND /DIAGNOSTIC UNIT



FRONT VIEW

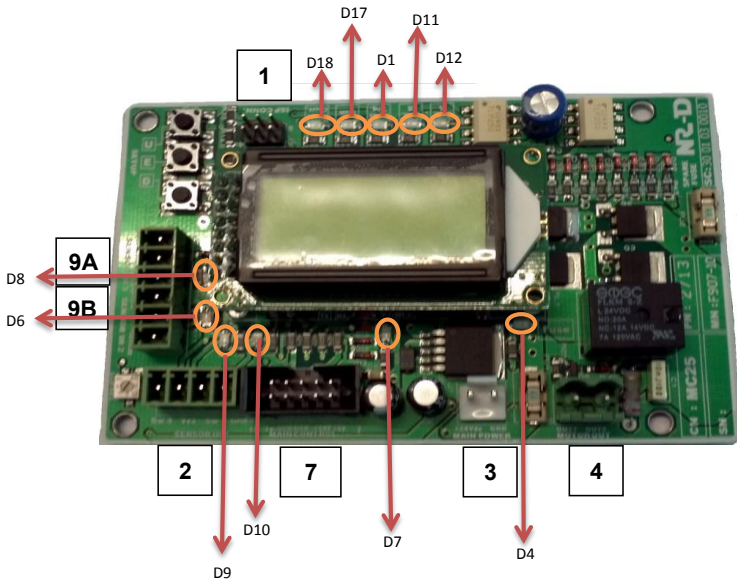


REAR VIEW

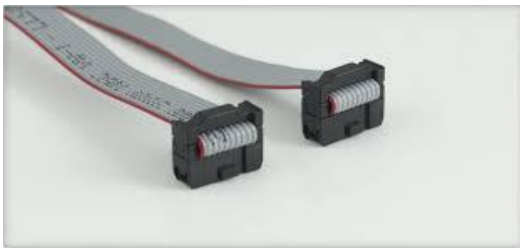
8		CABLE COLORS
SOUND/DIAGNOSTIC UNIT		
1	+5Vdc	BLACK
2	Gnd	RED
3	Rx	GREEN
4	Tx	YELLOW

Volume control

MOTOR DRIVER BOARD



LED DIOD DESCRIPTION	
D1-RED	MOTOR OVER TORQ
D4-YELLOW	FAULT FUSE
D6-GREEN	SENSOR LED B
D7-RED	POWER LED
D8-GREEN	SENSOR LED A
D9-GREEN	ENCODER LED A
D10-GREEN	ENCODER LED B
D11-GREEN	DIRECTION B LED
D12-GREEN	DIRECTION A LED
D17-YELLOW	RUN LED
D18-RED	OVER CURRENT LED



1			CABLE COLORS	
EXTERNAL I/O (PRG)			CABLE COLORS	
6 4 2	5 3 1	1	Ext I/O 1	N.C.
		2	+5Vdc	N.C.
		3	Ext I/O 3	N.C.
		4	Ext I/O 4	N.C.
		5	Reset	N.C.
		6	Gnd	N.C.

2			CABLE COLORS
ENCODER DATA			CABLE COLORS
1 2 3 4	1	Gnd	BLUE
	2	Encoder A	YELLOW
	3	+5Vdc	BROWN
	4	Encoder B	WHITE

3			CABLE COLORS
1 2 Power IN			CABLE COLORS
1 2	1	+24Vdc	RED
	2	Gnd	BLACK

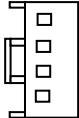
4			CABLE COLORS
MOTOR OUT			CABLE COLORS
1 2	1	Motor Out (Brown)	BROWN
	2	Motor Out (Blue)	BLUE

7			CABLE COLORS
MAIN CONTROL			CABLE COLORS
1 2 3 4 5 6 7 8 9 10	1	+5Vdc	N.C.
	2	+5Vdc	N.C.
	3	+24Vdc	N.C.
	4	+24Vdc	N.C.
	5	I/O1	BLACK
	6	Gnd	N.C.
	7	I/O2	RED
	8	Gnd	N.C.
	9	Rx	GREEN
	10	Tx	YELLOW

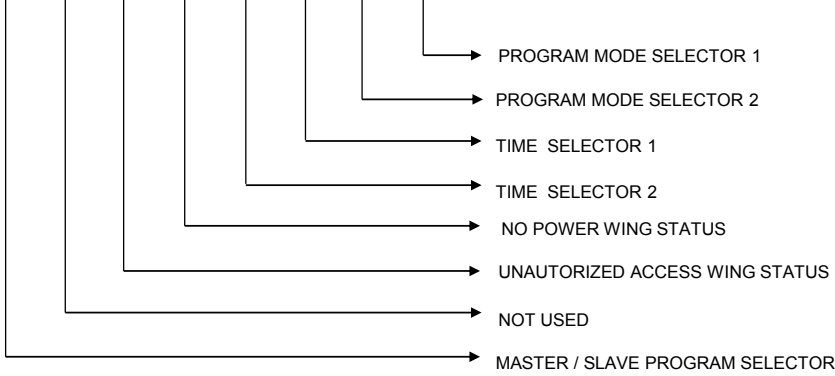
9			CABLE COLORS
SENSOR DATA			CABLE COLORS
1 2 3 4 5 6	1	+24Vdc	N.C.
	2	Blank	NC
	3	Gnd	N.C.
	4	+24Vdc	N.C.
	5	Proximity Sensor B	YELLOW
	6	Gnd	N.C.

SMPS UNIT



MAIN POWER			
<i>SMPS POWER CABLE</i>			CABLE COLORS
	1	+24Vdc	BLUE
	2	+24Vdc	GRAY
	3	Gnd.	BROWN
	4	Gnd.	BLACK

DIP SWITCH CONFIGURATIONS



MASTER UNIT

MASTER / SLAVE PROGRAM SELECTION	
SW	EXPLANATION
1	
ON	In Slave Unit Must Be Always ON
OFF	In Master Unit Must Be Always OFF

SW	EXPLANATION
2	
ON	RESERVE
OFF	RESERVE

UNAUTHORIZED ACCESS WING STATUS	
SW	EXPLANATION
3	
ON	Off default-wing open with alarm
OFF	On: Wings close quickly with alarm

NO POWER WING STATUS	
SW	EXPLANATION
4	
ON	Wing Stays Open When Power Is Off (Free Pass)
OFF	Wing Stays Closed When Power Is Off

TIME SELECTION		
SW	SW	EXPLANATION
5	6	
OFF	OFF	Entry Time Out 12 Seconds
ON	OFF	Entry Time Out 8 Seconds
OFF	ON	Entry Time Out 4 Seconds
ON	ON	Entry Time Out 2 Seconds

PROGRAM MODE SELECTION		
SW	SW	EXPLANATION
7	8	
OFF	OFF	Passage With Standart Button Control
ON	OFF	no mode
OFF	ON	A-B Direction :Free Passage With Photocell , Direction : Controlled Access
ON	ON	B-A Direction :Free Passage With Photocell , Direction : Controlled Access

SLAVE UNIT

MASTER / SLAVE PROGRAM SELECTION	
SW	EXPLANATION
1	
ON	In Slave Unit Must Be Always ON
OFF	In Master Unit Must Be Always OFF

SW	EXPLANATION
2	
ON	RESERVE
OFF	RESERVE

SW	EXPLANATION
3	
ON	RESERVE
OFF	RESERVE

NO POWER WING STATUS	
SW	EXPLANATION
4	
ON	Wing Stays Open When Power Is Off (Free Pass)
OFF	Wing Stays Closed When Power Is Off

SW	EXPLANATION
5	
ON	RESERVE
OFF	RESERVE

CROSS PHOTOCCELL SENSOR ENABLE/DISABLE	
SW	EXPLANATION
6	
ON	CrossPhotocell Sensor Disable
OFF	CrossPhotocell Sensor Enable

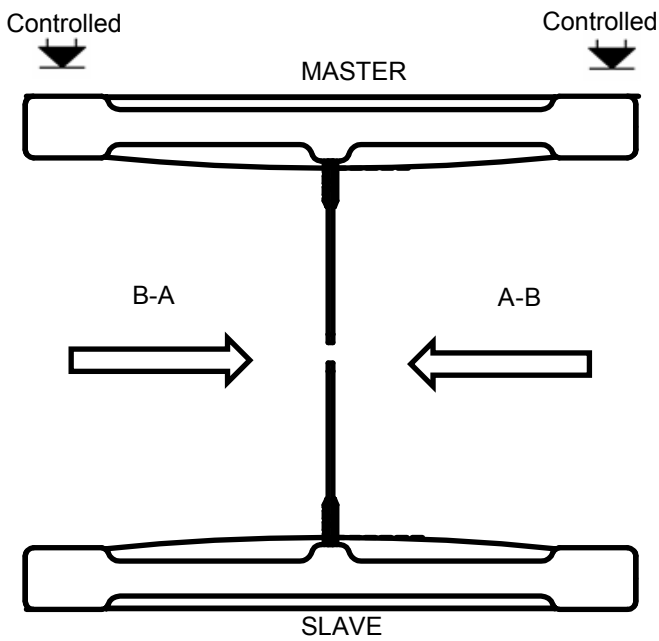
SW	EXPLANATION
7	
ON	RESERVE
OFF	RESERVE

HURRA MOD	
SW	EXPLANATION
8	
ON	ENABLE
OFF	DISABLE

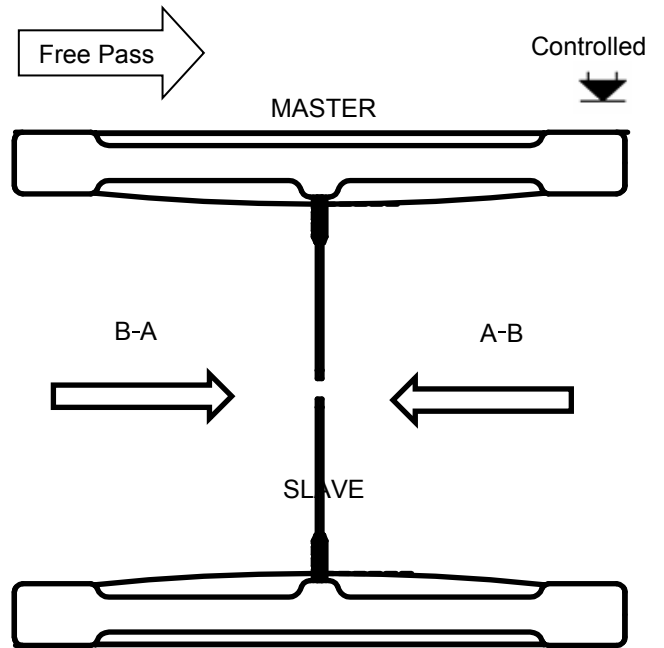
DIP SWITCH CONFIGURATIONS

PROGRAM MODE SELECTION (MASTER SIDE)			
	SW 7	SW 8	EXPLANATION
MODE 1	OFF	OFF	Passage With Standart Button Control
NO MODE	ON	OFF	no mode
MODE 2	OFF	ON	A-B Direction :Free Passage With Photocell , B-A Direction : Controlled Access
MODE 3	ON	ON	B-A Direction :Free Passage With Photocell , A-B Direction : Controlled Access

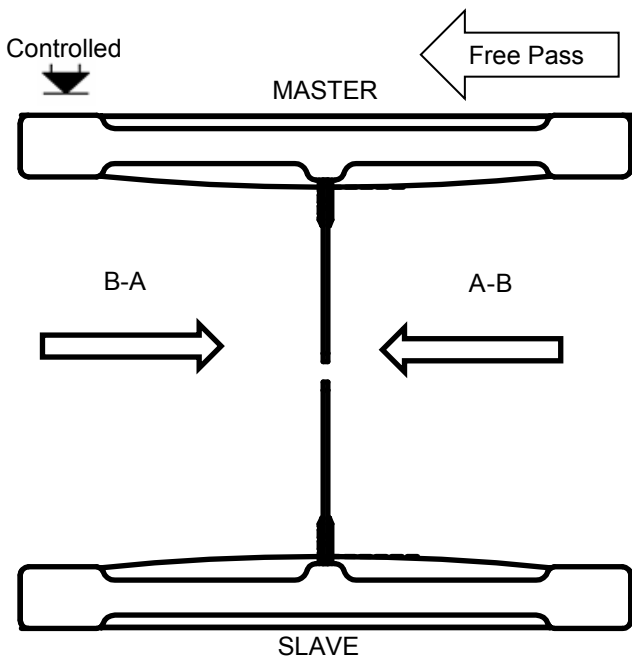
SLAVE SIDE SW 8	
OFF	Default fast free passage mode (unrestricted)
ON	Free passage one person at a time



Mode 1

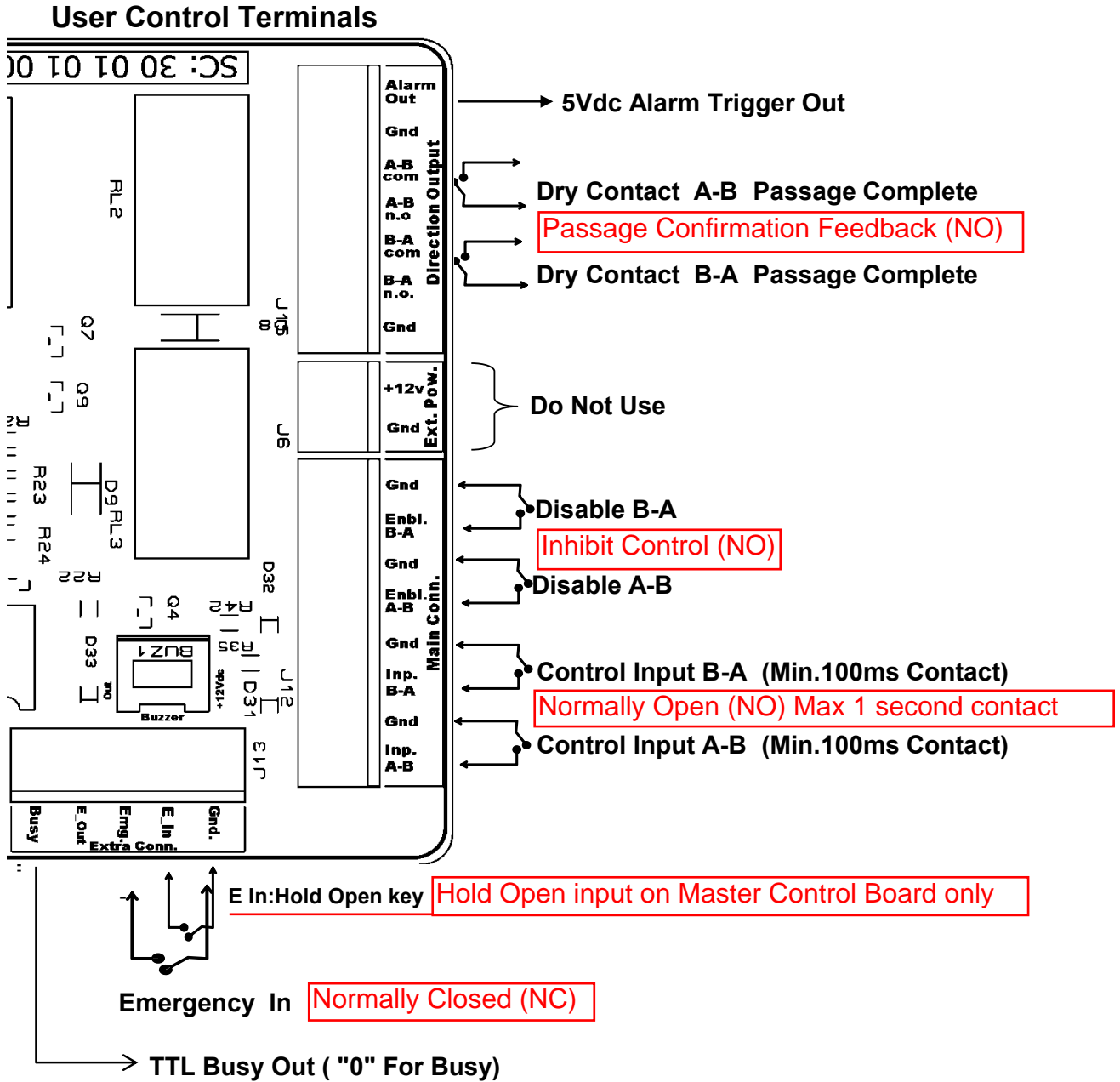


Mode 2



Mode 3

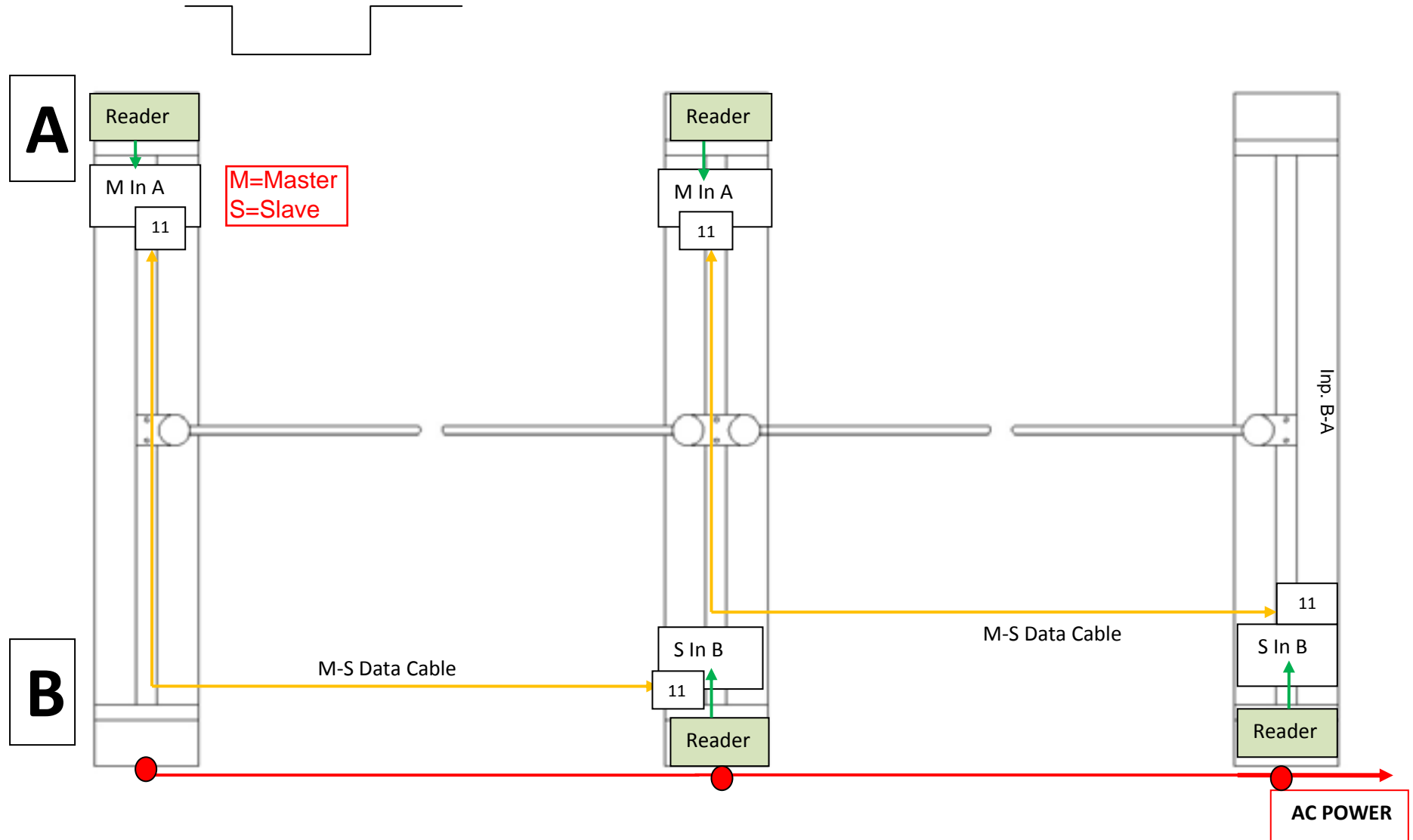
USER CONTROL TERMINALS



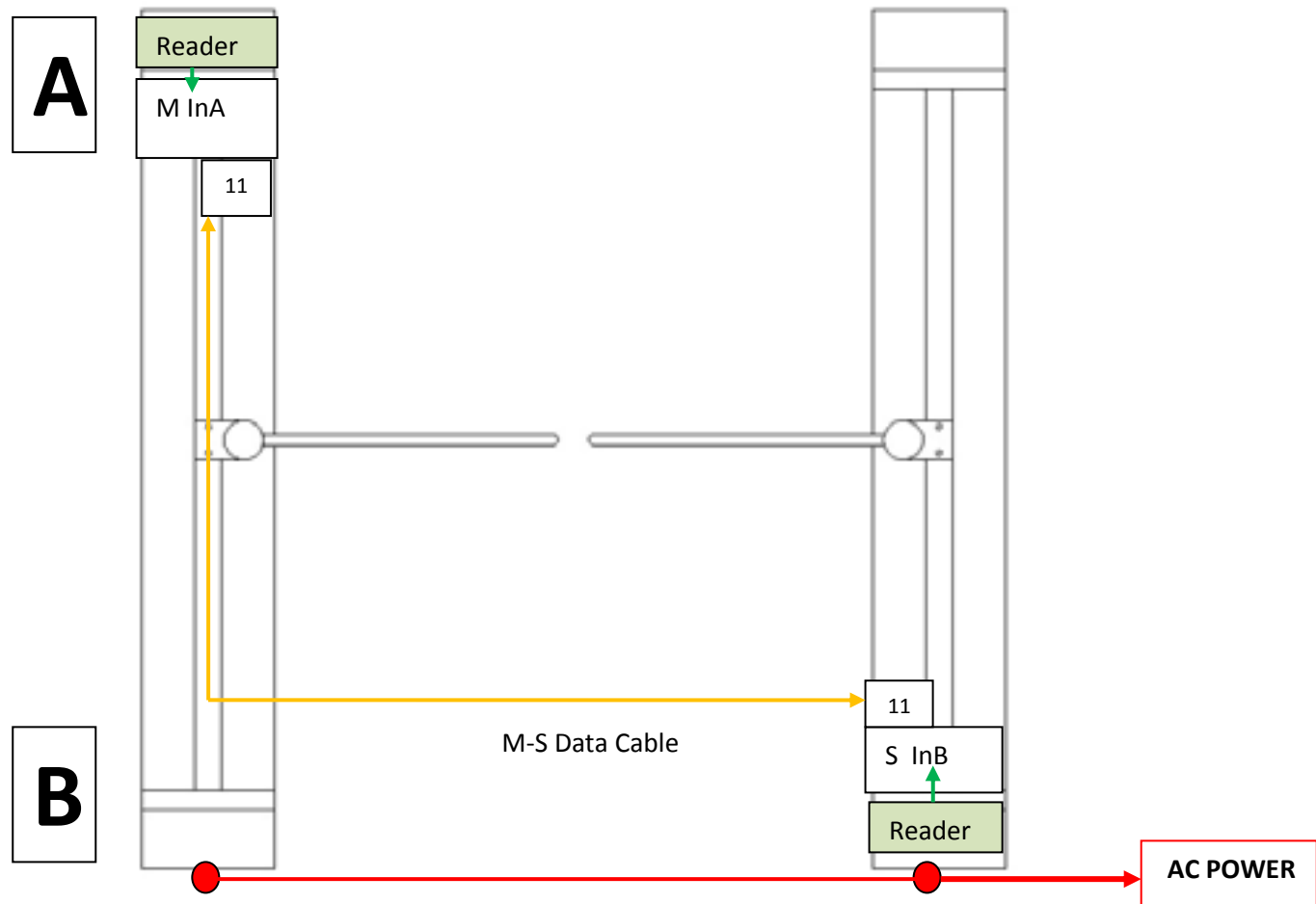
PADDLE GATE SYSTEM WIRING DIAGRAM

Double Lane Setup

Reader Inputs: Normally Open (NO) 100mS to 1000mS



Single Lane Setup



CE UYGUNLUK DEKLARASYONU / CE DECLARATION OF CONFORMITY



**ÜRETİCİ FIRMA/
MANUFACTURER COMPANY** : ÖZAK GEÇİŞ TEKNOLOJİLERİ SANAYİ TİC. A.Ş.
ADRES/ADDRESS : ÇUHANE CAD. NO: 130 41080 KÖSEKÖY/KOCAELİ/TÜRKİYE

Aşağıda adı geçen ürünlerin üretimi, kontrolü ve son değerlendirmeleri ÖZAK tarafından gerçekleştirilmektedir.
Manufacturing, control and final assessment of the below mentioned products are done by ÖZAK.

ÜRÜN LİSTESİ/LIST OF PRODUCTS

Açıklamalar/Explanations: TURNİKELER (BEL TİPİ TURNİKELER / BOY TİPİ TURNİKELER / HIZLI GEÇİŞ TURNİKELERİ /
ENGELLİ GEÇİŞ TURNİKELERİ / YÜKSEK GÜVENLİK TURNİKE VE KAPILARI / YARIM BOY TURNİKELER /
GEÇİŞ KAPILARI / SPC ÖZEL DİZAYN TURNİKELER / SERBEST GEÇİŞ TURNİKELER)

TURNSTILES (WAIST HEIGHT TURNSTILES / FULL HEIGHT TURNSTILES /
SPEED GATES TURNSTILES / REVOLVING WING GATES TURNSTILES /
SECURITY DOORS AND TURNSTILES / HALF HEIGHT TURNSTILES / PEDESTRIAN GATES /
SPECIAL DESIGN TURNSTILES / FREE PASSAGE (RETAIL LINE) TURNSTILES)

İlgili Direktifler/Relevant Directives:

(2006/42/EC) Makine Emniyet Yönetmeliği / *Machine Safety Directive,*

HARMONİZE STANDARTLAR'a Göre Uygulanmış Yönetmelikler/ :EN ISO 12100:2010, EN 60204-1:2018, EN ISO 13857:2008,
Regulations applied according to HARMONIZED STANDARDS EN ISO 14120:2015, EN 349:1993/A1:2008.

ÖZAK GEÇİŞ TEKNOLOJİLERİ SANAYİ TİC. A.Ş. yukarıda listesi verilen ürünlerin 2006/42/EC Makine Yönetmeliği ve ilgili harmonize standartların gerekliliklerini sağladığını ve uygunluğunu beyan eder.

ÖZAK GEÇİŞ TEKNOLOJİLERİ SANAYİ TİC. A.Ş. hereby declare that the above listed products satisfy and comply with the requirements of Harmonised Standards for 2006/42/EC Machinery Directive.

İsim/Name : ÖZER ÖZALP Ünvan/Title : GENEL MÜDÜR/GENERAL MANAGER
Yer ve Tarih/Place and Date : KOCAELİ / 02.07.19 İmza/Signature

Warranty Terms and Conditions

1. Warranty period starts after the date of purchase of the goods and continues for twentyfour (24) months against manufacturing defects. Warranty coverage is in form of supplying replacement parts free of charge.
2. Availability of the spare parts by the manufacturing company is guaranteed for ten (10) years following the manufacturing date of the product.
3. Any tampering, failures resulting from unauthorized modification or repair attempt and shall void the warranty.
4. Expiration time for the warranty of the parts replaced within the warranty period is the same as that of the turnstile.
5. When the turnstile fails within the warranty period, duration of repair is added to the warranty period.
6. Manufacturing company supplies required replacement parts to repair defects and failures during the warranty period in accordance with the terms stated herein. The parts are supplied to the authorized dealer/service center which has sold the product to end user.
7. It is the user's responsibility to check that technical services are carried out in accordance with the terms stated herein.
8. The user must retain the warranty certificates and present to the authorized service personnel when required.
9. Users are expected to sign the failure report/ service forms that are filled after service/maintenance work performed under the warranty coverage.
10. In case any dispute or problem related to the warranty is not resolved by the manufacturer, users can apply to the Republic of Turkey Ministry of Industry and Trade, Directorate General of Protecting Consumer Rights and Competition.
11. All replacement parts sold by Ozak are warranted for a period of one year following the date of purchase, excluding failures resulting from physical damage, incorrect installation, misuse, tampering and similar reasons beyond manufacturers control.
12. The specified warranty periods of all our products and MCBF's are valid in case of evidence that the periodic maintenances have been done as recommended by the manufacturer (minimum once every six months for motor driven products, minimum once a year for manual driven products and also considering the given maintenance processes and to be done by authorised technician trained by the manufacturer).

Cases Excluded from the Coverage of Warranty

1. Any tampering or damage on warranty certificate or serial numbers and labels that prevent the identification of the product shall void the warranty.
2. Any modifications, addition of accessories and parts, or replacement of parts without approval of manufacturer fall within the scope of tampering with the system, therefore terminates liability of the manufacturing company.
3. Any damage and failure resulting from any of the conditions listed below are not covered by warranty:
 - a) Misuse, abuse, deliberate act or negligence,
 - b) Glass breakage,
 - c) Failures caused by short circuit, power surge, incorrect wiring and voltage applications, improper grounding, change of phase group, induction current effects,
 - d) Maintenance, repair, additions or replacement of parts and accessories or moving the turnstiles from original place by unauthorised personnel or corporation, and lack of annual maintenance of the products.
 - e) Shipping and handling damages,
 - f) Failures caused by exposure to unsuitable environmental conditions for the stated technical specifications of the product (temperature range, IP grade etc) such as excessively dusty, humid, dirty and other environments.
 - g) Failures caused by leakage of water into the internal parts of the turnstile due to application of pressurized water on the product,
 - h) Damage and failure caused by lightning, flood, fire, storm, hurricanes, earthquake and similar natural disasters,
 - i) Accidents that occur at the location where the products are installed,
 - j) Damages that occur as a result of circumstances beyond reasonable control of the manufacturer or the user (armed conflicts, civil unrest, blockade, revolution, insurrection, mobilization, looting etc.)
 - k) THE DAMAGE OR FAILURES OCCURRING DUE TO FEEDING OF EXTERNAL DEVICES (CARD READERS, TERMINALS, INDICATIONS, COMMUNICATION DEVICES, ETC.) FROM THE CONTROL BOARD OR POWER SUPPLY UNIT INSIDE THE TURNSTILE.



Warranty Certificate

BRAND NAME :

MODEL :

DATE OF DELIVERY :

WARRANTY PERIOD :

SERIAL NUMBER :

MANUFACTURER : ÖZAK GEÇİŞ TEKNOLOJİLERİ SANAYİ TİC A.Ş.
ADDRESS : Çuhane CD. NO: 130 41080 KÖSEKÖY / KOCAELİ / TURKEY
PHONE&FAX : +90 262 373 48 48 Pbx.
E-MAIL : ozak@ozak-t.com
WEB : www.ozak-t.com



TS EN ISO 9001 : 2015



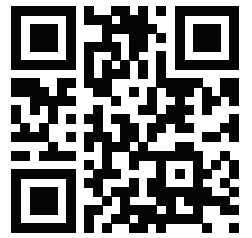
ÖZAK



Google Map



+90 262 373 48 48



www.ozak-t.com

Cuhane Cd. N: 130 41080
Köseköy / Kartepe / Kocaeli / TÜRKİYE

T: +90 262 373 48 48

F: +90 262 373 48 48

E: ozak@ozak-t.com